

BAMBI Antibody (monoclonal) (M01)

Mouse monoclonal antibody raised against a full length recombinant BAMBI.

Catalog # AT1265a

Product Information

Application	WB, E
Primary Accession	Q13145
Other Accession	BC019252
Reactivity	Human
Host	Mouse
Clonality	monoclonal
Isotype	IgG1 kappa
Clone Names	3C1-1D1
Calculated MW	29108

Additional Information

Gene ID	25805
Other Names	BMP and activin membrane-bound inhibitor homolog, Non-metastatic gene A protein, Putative transmembrane protein NMA, BAMBI, NMA
Target/Specificity	BAMBI (AAH19252, 1 a.a. ~ 260 a.a) full-length recombinant protein with GST tag. MW of the GST tag alone is 26 KDa.
Dilution	WB~~1:500~1000 E~~N/A
Format	Clear, colorless solution in phosphate buffered saline, pH 7.2 .
Storage	Store at -20°C or lower. Aliquot to avoid repeated freezing and thawing.
Precautions	BAMBI Antibody (monoclonal) (M01) is for research use only and not for use in diagnostic or therapeutic procedures.

Background

This gene encodes a transmembrane glycoprotein related to the type I receptors of the transforming growth factor-beta (TGF-beta) family, whose members play important roles in signal transduction in many developmental and pathological processes. The encoded protein however is a pseudoreceptor, lacking an intracellular serine/threonine kinase domain required for signaling. Similar proteins in frog, mouse and zebrafish function as negative regulators of TGF-beta, which has led to the suggestion that the encoded protein may function to limit the signaling range of the TGF-beta family during early embryogenesis.

References

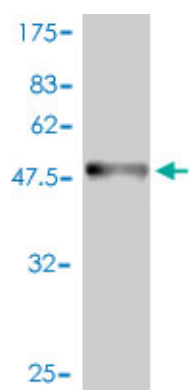
1. Adiponectin induces the transforming growth factor decoy receptor BAMBI in human hepatocytes. Wanninger J, Neumeier M, Bauer S, Weiss TS, Eisinger K, Walter R, Dorn C, Hellerbrand C, Schaffler A, Buechler C. *FEBS Lett*. 2011 Apr 7. [Epub ahead of print].

2. BAMBI Is Expressed in Endothelial Cells and Is Regulated by Lysosomal/Autolysosomal Degradation. Xavier S, Gilbert V, Rastaldi MP, Krick S, Kollins D, Reddy A, Bottinger E, Cohen CD, Schlondorff D. *PLoS One*. 2010 Sep 24;5(9):e12995.

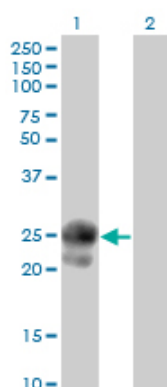
3. BAMBI is overexpressed in ovarian cancer and co-translocates with Smads into the nucleus upon TGF- β treatment. Pils D, Wittinger M, Petz M, Gugerell A, Gregor W, Alfan A, Horvat R, Braicu EI, Sehouli J, Zeillinger R, Mikulits W, Krainer M. *Gynecol Oncol*. 2010 Feb 25. [Epub ahead of print].

4. BAMBI (bone morphogenetic protein and activin membrane-bound inhibitor) reveals the involvement of the transforming growth factor- β family in pain modulation. Tramullas M, Lantero A, Diaz A, Morchon N, Merino D, Villar A, Buscher D, Merino R, Hurle JM, Izpisua-Belmonte JC, Hurle MA. *J Neurosci*. 2010 Jan 27;30(4):1502-11.

Images

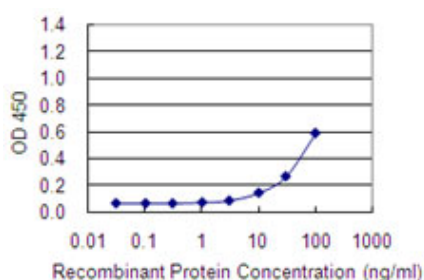


Antibody Reactive Against Recombinant Protein. Western Blot detection against Immunogen (54.34 KDa) .



Western Blot analysis of BAMBI expression in transfected 293T cell line by BAMBI monoclonal antibody (M01), clone 3C1-1D1.

Lane 1: BAMBI transfected lysate (29.1 KDa).
Lane 2: Non-transfected lysate.



Detection limit for recombinant GST tagged BAMBI is 3 ng/ml as a capture antibody.

Please note: All products are 'FOR RESEARCH USE ONLY. NOT FOR USE IN DIAGNOSTIC OR THERAPEUTIC PROCEDURES'.