

BATF Antibody (monoclonal) (M03)

Mouse monoclonal antibody raised against a partial recombinant BATF.

Catalog # AT1273a

Product Information

Application	WB, E
Primary Accession	Q16520
Other Accession	NM_006399
Reactivity	Human, Mouse, Rat
Host	mouse
Clonality	monoclonal
Isotype	IgG1 Kappa
Clone Names	1G4
Calculated MW	14120

Additional Information

Gene ID	10538
Other Names	Basic leucine zipper transcriptional factor ATF-like, B-cell-activating transcription factor, B-ATF, SF-HT-activated gene 2 protein, SFA-2, BATF
Target/Specificity	BATF (NP_006390, 34 a.a. ~ 125 a.a) partial recombinant protein with GST tag. MW of the GST tag alone is 26 KDa.
Dilution	WB~~1:500~1000 E~~N/A
Format	Clear, colorless solution in phosphate buffered saline, pH 7.2 .
Storage	Store at -20°C or lower. Aliquot to avoid repeated freezing and thawing.
Precautions	BATF Antibody (monoclonal) (M03) is for research use only and not for use in diagnostic or therapeutic procedures.

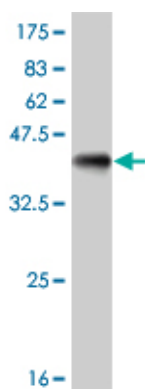
Background

The protein encoded by this gene is a nuclear basic leucine zipper protein that belongs to the AP-1/ATF superfamily of transcription factors. The leucine zipper of this protein mediates dimerization with members of the Jun family of proteins. This protein is thought to be a negative regulator of AP-1/ATF transcriptional events.

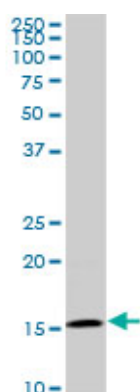
References

1.A Differentiation Checkpoint Limits Hematopoietic Stem Cell Self-Renewal in Response to DNA Damage.Wang J, Sun Q, Morita Y, Jiang H, GroB A, Lechel A, Hildner K, Guachalla LM, Gompf A, Hartmann D,

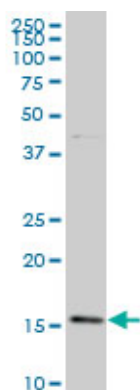
Images



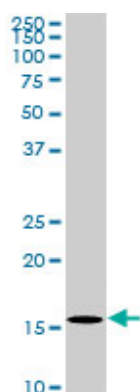
Antibody Reactive Against Recombinant Protein. Western Blot detection against Immunogen (35.86 KDa) .



BATF monoclonal antibody (M03), clone 1G4. Western Blot analysis of BATF expression in PC-12 ((Cat # AT1273a)

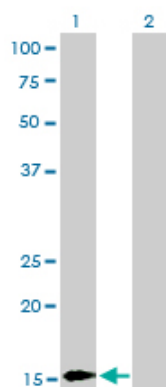


BATF monoclonal antibody (M03), clone 1G4 Western Blot analysis of BATF expression in Hela S3 NE ((Cat # AT1273a)



BATF monoclonal antibody (M03), clone 1G4. Western Blot analysis of BATF expression in Raw 264.7 ((Cat # AT1273a)

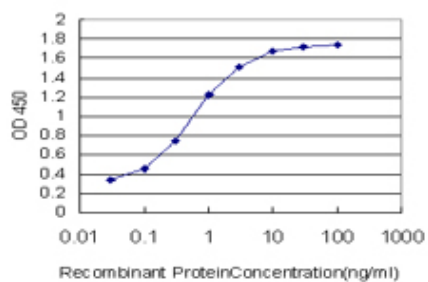
Western Blot analysis of BATF expression in transfected 293T cell line by BATF monoclonal antibody (M03), clone



1G4.

Lane 1: BATF transfected lysate(14.1 KDa).

Lane 2: Non-transfected lysate.



Detection limit for recombinant GST tagged BATF is approximately 0.03ng/ml as a capture antibody.

Please note: All products are 'FOR RESEARCH USE ONLY. NOT FOR USE IN DIAGNOSTIC OR THERAPEUTIC PROCEDURES'.