

## BCAS2 Antibody (monoclonal) (M01)

Mouse monoclonal antibody raised against a partial recombinant BCAS2.

Catalog # AT1280a

### Product Information

---

<b>Application</b>	WB, E
<b>Primary Accession</b>	<a href="#">O75934</a>
<b>Other Accession</b>	<a href="#">NM_005872</a>
<b>Reactivity</b>	Human
<b>Host</b>	mouse
<b>Clonality</b>	monoclonal
<b>Isotype</b>	IgG2a Kappa
<b>Clone Names</b>	1D10
<b>Calculated MW</b>	26131

### Additional Information

---

<b>Gene ID</b>	10286
<b>Other Names</b>	Pre-mRNA-splicing factor SPF27, Breast carcinoma-amplified sequence 2, DNA amplified in mammary carcinoma 1 protein, Spliceosome-associated protein SPF 27, BCAS2, DAM1
<b>Target/Specificity</b>	BCAS2 (NP_005863, 116 a.a. ~ 225 a.a) partial recombinant protein with GST tag. MW of the GST tag alone is 26 KDa.
<b>Dilution</b>	WB~~1:500~1000 E~~N/A
<b>Format</b>	Clear, colorless solution in phosphate buffered saline, pH 7.2 .
<b>Storage</b>	Store at -20°C or lower. Aliquot to avoid repeated freezing and thawing.
<b>Precautions</b>	BCAS2 Antibody (monoclonal) (M01) is for research use only and not for use in diagnostic or therapeutic procedures.

### References

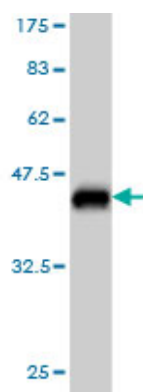
---

1.A Quantitative Proteomic Analysis Uncovers the Relevance of CUL3 in Bladder Cancer Aggressiveness.Grau L, Luque-Garcia JL, Gonzalez-Peramato P, Theodorescu D, Palou J, Fernandez-Gomez JM, Sanchez-Carbayo M.PLoS One. 2013;8(1):e53328. doi: 10.1371/journal.pone.0053328. Epub 2013 Jan 8.

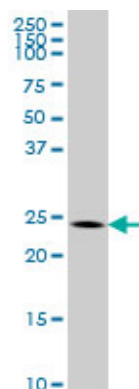
### Images

---

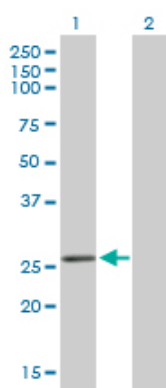
Antibody Reactive Against Recombinant Protein.Western



Blot detection against Immunogen (37.84 KDa) .



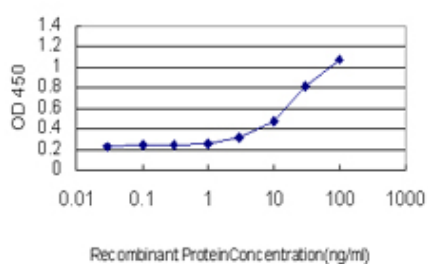
BCAS2 monoclonal antibody (M01), clone 1D10 Western Blot analysis of BCAS2 expression in K-562 ( (Cat # AT1280a )



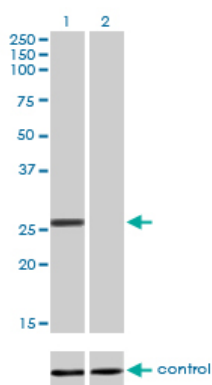
Western Blot analysis of BCAS2 expression in transfected 293T cell line by BCAS2 monoclonal antibody (M01), clone 1D10.

Lane 1: BCAS2 transfected lysate(26.1 KDa).

Lane 2: Non-transfected lysate.



Detection limit for recombinant GST tagged BCAS2 is approximately 1ng/ml as a capture antibody.



Western blot analysis of BCAS2 over-expressed 293 cell line, cotransfected with BCAS2 Validated Chimera RNAi ( (Cat # AT1280a )

Please note: All products are 'FOR RESEARCH USE ONLY. NOT FOR USE IN DIAGNOSTIC OR THERAPEUTIC PROCEDURES'.