

BCL11A Antibody (monoclonal) (M03)

Mouse monoclonal antibody raised against a partial recombinant BCL11A.

Catalog # AT1281a

Product Information

Application	WB, IHC, IF, E
Primary Accession	Q9H165
Other Accession	NM_018014
Reactivity	Human
Host	mouse
Clonality	monoclonal
Isotype	IgG2a Kappa
Clone Names	3D9
Calculated MW	91197

Additional Information

Gene ID	53335
Other Names	B-cell lymphoma/leukemia 11A, BCL-11A, B-cell CLL/lymphoma 11A, COUP-TF-interacting protein 1, Ecotropic viral integration site 9 protein homolog, EVI-9, Zinc finger protein 856, BCL11A, CTIP1, EVI9, KIAA1809, ZNF856
Target/Specificity	BCL11A (NP_060484, 1 a.a. ~ 88 a.a) partial recombinant protein with GST tag. MW of the GST tag alone is 26 KDa.
Dilution	WB~~1:500~1000 IHC~~1:100~500 IF~~1:50~200 E~~N/A
Format	Clear, colorless solution in phosphate buffered saline, pH 7.2 .
Storage	Store at -20°C or lower. Aliquot to avoid repeated freezing and thawing.
Precautions	BCL11A Antibody (monoclonal) (M03) is for research use only and not for use in diagnostic or therapeutic procedures.

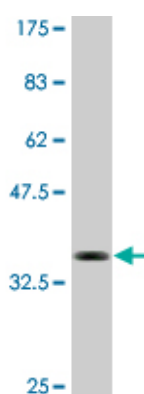
Background

This gene encodes a C2H2 type zinc-finger protein by its similarity to the mouse Bcl11a/Evi9 protein. The corresponding mouse gene is a common site of retroviral integration in myeloid leukemia, and may function as a leukemia disease gene, in part, through its interaction with BCL6. During hematopoietic cell differentiation, this gene is down-regulated. It is possibly involved in lymphoma pathogenesis since translocations associated with B-cell malignancies also deregulates its expression. Multiple transcript variants encoding several different isoforms have been found for this gene.

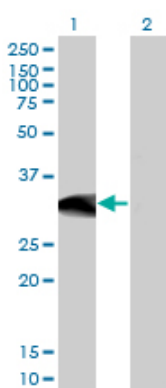
References

Variation at the NFATC2 Locus Increases the Risk of Thiazolinedinedione-Induced Edema in the Diabetes REduction Assessment with ramipril and rosiglitazone Medication (DREAM) Study. Bailey SD, et al. Diabetes Care, 2010 Jul 13. PMID 20628086. 14q32/miRNA clusters loss of heterozygosity in acute lymphoblastic leukemia is associated with up-regulation of BCL11a. Agueli C, et al. Am J Hematol, 2010 Aug. PMID 20578197. Analysis of the REL, BCL11A, and MYCN proto-oncogenes belonging to the 2p amplicon in chronic lymphocytic leukemia. Deambrogi C, et al. Am J Hematol, 2010 Jul. PMID 20575024. The XmnI (G)gamma polymorphism influences hemoglobin F synthesis contrary to BCL11A and HBS1L-MYB SNPs in a cohort of 57 beta-thalassemia intermedia patients. Nguyen TK, et al. Blood Cells Mol Dis, 2010 Aug 15. PMID 20472475. Transcriptional silencing of {gamma}-globin by BCL11A involves long-range interactions and cooperation with SOX6. Xu J, et al. Genes Dev, 2010 Apr 15. PMID 20395365.

Images

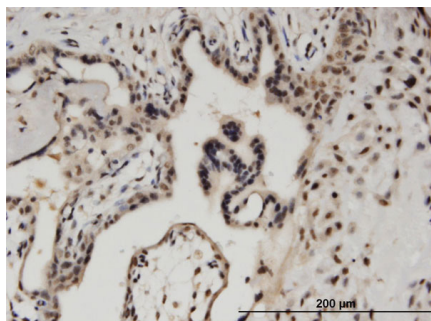


Antibody Reactive Against Recombinant Protein. Western Blot detection against Immunogen (35.42 KDa) .



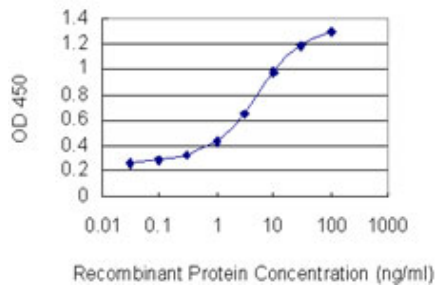
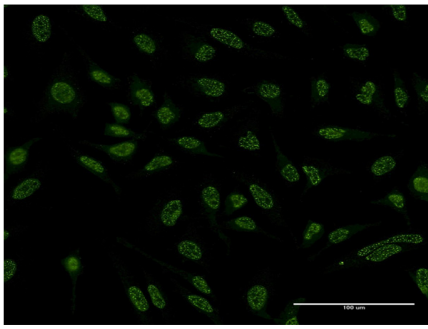
Western Blot analysis of BCL11A expression in transfected 293T cell line by BCL11A monoclonal antibody (M03), clone 3D9.

Lane 1: BCL11A transfected lysate (26.865 KDa).
Lane 2: Non-transfected lysate.



Immunoperoxidase of monoclonal antibody to BCL11A on formalin-fixed paraffin-embedded human placenta. [antibody concentration 3 ug/ml]

Immunofluorescence of monoclonal antibody to BCL11A on HeLa cell . [antibody concentration 10 ug/ml]



Detection limit for recombinant GST tagged BCL11A is 0.03 ng/ml as a capture antibody.

Please note: All products are 'FOR RESEARCH USE ONLY. NOT FOR USE IN DIAGNOSTIC OR THERAPEUTIC PROCEDURES'.