

BCL2L12 Antibody (monoclonal) (M01)

Mouse monoclonal antibody raised against a partial recombinant BCL2L12.

Catalog # AT1283a

Product Information

Application	WB, IF
Primary Accession	Q9HB09
Other Accession	BC007724
Reactivity	Human
Host	mouse
Clonality	monoclonal
Isotype	IgG1 Kappa
Clone Names	1B1
Calculated MW	26908

Additional Information

Gene ID	83596
Other Names	Bcl-2-like protein 12, Bcl2-L-12, Bcl-2-related proline-rich protein, BCL2L12, BPR
Target/Specificity	BCL2L12 (AAH07724, 174 a.a. ~ 273 a.a) partial recombinant protein with GST tag. MW of the GST tag alone is 26 KDa.
Dilution	WB~~1:500~1000 IF~~1:50~200
Format	Clear, colorless solution in phosphate buffered saline, pH 7.2 .
Storage	Store at -20°C or lower. Aliquot to avoid repeated freezing and thawing.
Precautions	BCL2L12 Antibody (monoclonal) (M01) is for research use only and not for use in diagnostic or therapeutic procedures.

Background

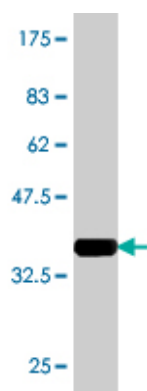
The protein encoded by this gene belongs to the BCL-2 protein family. BCL-2 family members form hetero- or homodimers and act as anti- or pro-apoptotic regulators that are involved in a wide variety of cellular activities. This protein contains a Bcl-2 homology domain 2 (BH2). The function of this gene has not yet been determined. Two alternatively spliced transcript variants of this gene encoding distinct isoforms have been reported.

References

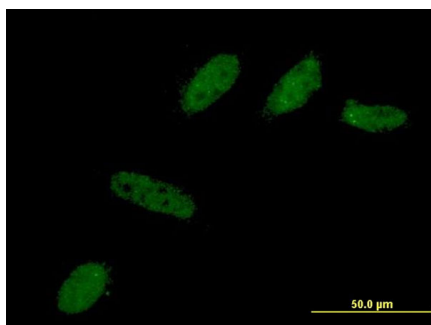
Variation at the NFATC2 Locus Increases the Risk of Thiazolinedinedione-Induced Edema in the Diabetes

REduction Assessment with ramipril and rosiglitazone Medication (DREAM) Study. Bailey SD, et al. Diabetes Care, 2010 Jul 13. PMID 20628086. Gene-centric association signals for lipids and apolipoproteins identified via the HumanCVD BeadChip. Talmud PJ, et al. Am J Hum Genet, 2009 Nov. PMID 19913121. Molecular analysis and prognostic impact of the novel apoptotic gene BCL2L12 in gastric cancer. Florou D, et al. Biochem Biophys Res Commun, 2010 Jan 1. PMID 19903463. BCL2L12A localizes to the cell nucleus and induces growth inhibition through G2/M arrest in CHO cells. Hong Y, et al. Mol Cell Biochem, 2010 Jan. PMID 19763795. Molecular response of HL-60 cells to mitotic inhibitors vincristine and taxol visualized with apoptosis-related gene expressions, including the new member BCL2L12. Thomadaki H, et al. Ann N Y Acad Sci, 2009 Aug. PMID 19723066.

Images



Antibody Reactive Against Recombinant Protein. Western Blot detection against Immunogen (36.63 KDa) .



Immunofluorescence of monoclonal antibody to BCL2L12 on HeLa cell . [antibody concentration 10 ug/ml]

Please note: All products are 'FOR RESEARCH USE ONLY. NOT FOR USE IN DIAGNOSTIC OR THERAPEUTIC PROCEDURES'.