

BCL7C Antibody (monoclonal) (M01)

Mouse monoclonal antibody raised against a partial recombinant BCL7C.

Catalog # AT1285a

Product Information

Application	WB, E
Primary Accession	Q8WUZ0
Other Accession	NM_004765
Reactivity	Human
Host	mouse
Clonality	monoclonal
Isotype	IgG2a Kappa
Clone Names	5F1
Calculated MW	23468

Additional Information

Gene ID	9274
Other Names	B-cell CLL/lymphoma 7 protein family member C, BCL7C
Target/Specificity	BCL7C (NP_004756, 86 a.a. ~ 164 a.a) partial recombinant protein with GST tag. MW of the GST tag alone is 26 KDa.
Dilution	WB~~1:500~1000 E~~N/A
Format	Clear, colorless solution in phosphate buffered saline, pH 7.2 .
Storage	Store at -20°C or lower. Aliquot to avoid repeated freezing and thawing.
Precautions	BCL7C Antibody (monoclonal) (M01) is for research use only and not for use in diagnostic or therapeutic procedures.

Background

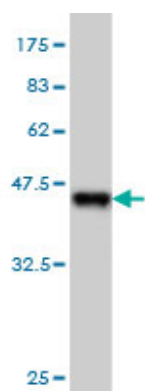
This gene is identified by the similarity of its product to the N-terminal region of BCL7A protein. The BCL7A protein is encoded by the gene known to be directly involved in a three-way gene translocation in a Burkitt lymphoma cell line. The function of this gene has not yet been determined.

References

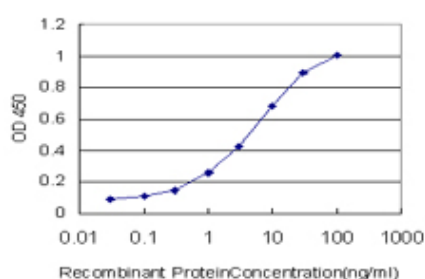
Association between genetic variants in VEGF, ERCC3 and occupational benzene haematotoxicity. Hosgood HD 3rd, et al. Occup Environ Med, 2009 Dec. PMID 19773279. Common genetic variants in candidate genes and risk of familial lymphoid malignancies. Liang XS, et al. Br J Haematol, 2009 Aug. PMID 19573080. Risk of non-Hodgkin lymphoma associated with germline variation in genes that regulate the cell cycle, apoptosis,

and lymphocyte development. Morton LM, et al. Cancer Epidemiol Biomarkers Prev, 2009 Apr. PMID 19336552. Global, in vivo, and site-specific phosphorylation dynamics in signaling networks. Olsen JV, et al. Cell, 2006 Nov 3. PMID 17081983. The status, quality, and expansion of the NIH full-length cDNA project: the Mammalian Gene Collection (MGC). Gerhard DS, et al. Genome Res, 2004 Oct. PMID 15489334.

Images



Antibody Reactive Against Recombinant Protein. Western Blot detection against Immunogen (34.43 KDa) .



Detection limit for recombinant GST tagged BCL7C is approximately 0.1 ng/ml as a capture antibody.

Please note: All products are 'FOR RESEARCH USE ONLY. NOT FOR USE IN DIAGNOSTIC OR THERAPEUTIC PROCEDURES'.