

BDKRB2 Antibody (monoclonal) (M01)

Mouse monoclonal antibody raised against a partial recombinant BDKRB2.

Catalog # AT1289a

Product Information

Application	WB, E
Primary Accession	P30411
Other Accession	NM_000623
Reactivity	Human
Host	mouse
Clonality	monoclonal
Isotype	IgG1 lambda
Clone Names	3F6
Calculated MW	44461

Additional Information

Gene ID	624
Other Names	B2 bradykinin receptor, B2R, BK-2 receptor, BDKRB2, BKR2
Target/Specificity	BDKRB2 (NP_000614, 1 a.a. ~ 60 a.a) partial recombinant protein with GST tag. MW of the GST tag alone is 26 KDa.
Dilution	WB~~1:500~1000 E~~N/A
Format	Clear, colorless solution in phosphate buffered saline, pH 7.2 .
Storage	Store at -20°C or lower. Aliquot to avoid repeated freezing and thawing.
Precautions	BDKRB2 Antibody (monoclonal) (M01) is for research use only and not for use in diagnostic or therapeutic procedures.

Background

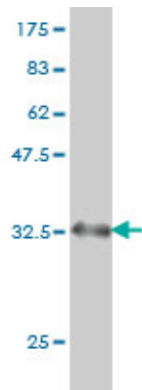
This gene encodes a receptor for bradykinin. The 9 aa bradykinin peptide elicits many responses including vasodilation, edema, smooth muscle spasm and pain fiber stimulation. This receptor associates with G proteins that stimulate a phosphatidylinositol-calcium second messenger system. Alternate start codons result in two isoforms of the protein.

References

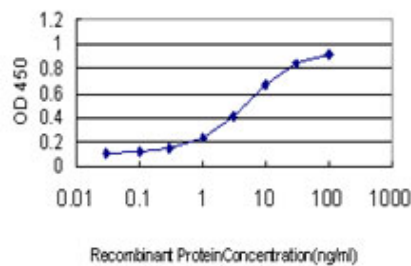
Variation at the NFATC2 Locus Increases the Risk of Thiazolinedione-Induced Edema in the Diabetes REduction Assessment with ramipril and rosiglitazone Medication (DREAM) Study. Bailey SD, et al. Diabetes Care, 2010 Jul 13. PMID 20628086. Generalist genes analysis of DNA markers associated with mathematical

ability and disability reveals shared influence across ages and abilities. Docherty SJ, et al. BMC Genet, 2010 Jul 5. PMID 20602751. Interactions among related genes of renin-angiotensin system associated with type 2 diabetes. Yang JK, et al. Diabetes Care, 2010 Jun 30. PMID 20592051. No association between alleles of the bradykinin receptor-B2 gene and acute mountain sickness. Wang P, et al. Exp Biol Med (Maywood), 2010 Jun. PMID 20511677. Establishment of an in vivo model facilitates B2 receptor protein maturation and heterodimerization. Abd Alla J, et al. Integr Biol (Camb), 2010 Apr 7. PMID 20473401.

Images



Antibody Reactive Against Recombinant Protein. Western Blot detection against Immunogen (32.34 KDa) .



Detection limit for recombinant GST tagged BDKRB2 is approximately 0.1 ng/ml as a capture antibody.

Please note: All products are 'FOR RESEARCH USE ONLY. NOT FOR USE IN DIAGNOSTIC OR THERAPEUTIC PROCEDURES'.