

BDNF Antibody (monoclonal) (M02)

Mouse monoclonal antibody raised against a full-length recombinant BDNF.

Catalog # AT1290a

Product Information

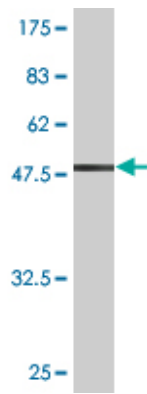
Application	WB, IF, IP
Primary Accession	P23560
Other Accession	BC029795
Reactivity	Human
Host	mouse
Clonality	monoclonal
Isotype	IgG2a Kappa
Clone Names	1B10
Calculated MW	27818

Additional Information

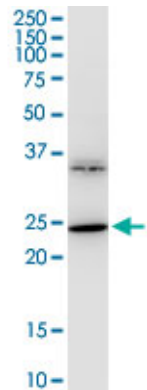
Gene ID	627
Other Names	Brain-derived neurotrophic factor, BDNF, Abrineurin, BDNF
Target/Specificity	BDNF (AAH29795, 1 a.a. ~ 247 a.a) full-length recombinant protein with GST tag. MW of the GST tag alone is 26 KDa.
Dilution	WB~~1:500~1000 IF~~1:50~200 IP~~N/A
Format	Clear, colorless solution in phosphate buffered saline, pH 7.2 .
Storage	Store at -20°C or lower. Aliquot to avoid repeated freezing and thawing.
Precautions	BDNF Antibody (monoclonal) (M02) is for research use only and not for use in diagnostic or therapeutic procedures.

Images

Antibody Reactive Against Recombinant Protein.Western
Blot detection against Immunogen (52.91 KDa) .

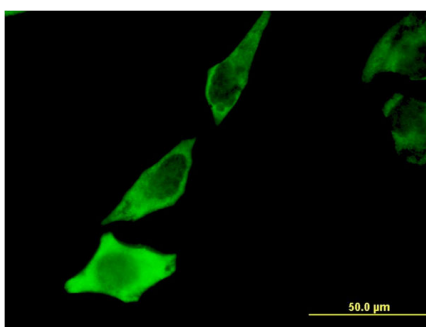
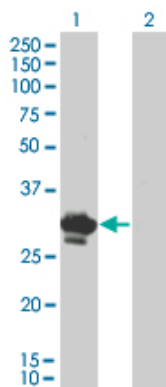


BDNF monoclonal antibody (M02), clone 1B10. Western Blot analysis of BDNF expression in IMR-32.

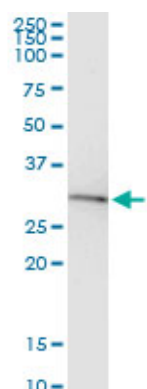


Western Blot analysis of BDNF expression in transfected 293T cell line by BDNF monoclonal antibody (M02), clone 1B10.

Lane 1: BDNF transfected lysate(28.9 KDa).
Lane 2: Non-transfected lysate.



Immunofluorescence of monoclonal antibody to BDNF on HeLa cell . [antibody concentration 10 ug/ml]



Immunoprecipitation of BDNF transfected lysate using anti-BDNF monoclonal antibody and Protein A Magnetic Bead ([U0007](#)), and immunoblotted with BDNF monoclonal antibody.

Please note: All products are 'FOR RESEARCH USE ONLY. NOT FOR USE IN DIAGNOSTIC OR THERAPEUTIC PROCEDURES'.