

## BMP7 Antibody (monoclonal) (M03)

Mouse monoclonal antibody raised against a full length recombinant BMP7.

Catalog # AT1305a

### Product Information

---

<b>Application</b>	WB, E
<b>Primary Accession</b>	<a href="#">P18075</a>
<b>Other Accession</b>	<a href="#">BC008584</a>
<b>Reactivity</b>	Human, Mouse
<b>Host</b>	mouse
<b>Clonality</b>	monoclonal
<b>Isotype</b>	IgG1 Kappa
<b>Clone Names</b>	S52
<b>Calculated MW</b>	49313

### Additional Information

---

<b>Gene ID</b>	655
<b>Other Names</b>	Bone morphogenetic protein 7, BMP-7, Osteogenic protein 1, OP-1, Eptotermin alfa, BMP7, OP1
<b>Target/Specificity</b>	BMP7 (AAH08584, 1 a.a. ~ 431 a.a) full-length recombinant protein with GST tag. MW of the GST tag alone is 26 KDa.
<b>Dilution</b>	WB~~1:500~1000 E~~N/A
<b>Format</b>	Clear, colorless solution in phosphate buffered saline, pH 7.2 .
<b>Storage</b>	Store at -20°C or lower. Aliquot to avoid repeated freezing and thawing.
<b>Precautions</b>	BMP7 Antibody (monoclonal) (M03) is for research use only and not for use in diagnostic or therapeutic procedures.

### Background

---

The bone morphogenetic proteins (BMPs) are a family of secreted signaling molecules that can induce ectopic bone growth. Many BMPs are part of the transforming growth factor-beta (TGFB) superfamily. BMPs were originally identified by an ability of demineralized bone extract to induce endochondral osteogenesis in vivo in an extraskeletal site. Based on its expression early in embryogenesis, the BMP encoded by this gene has a proposed role in early development and possible bone inductive activity.

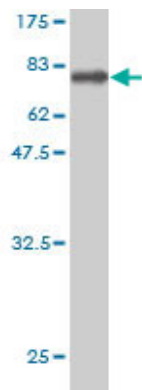
### References

---

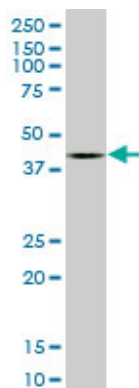
An approach based on a genome-wide association study reveals candidate loci for narcolepsy. Shimada M,

et al. Hum Genet, 2010 Oct. PMID 20677014.Variation at the NFATC2 Locus Increases the Risk of Thiazolinedinedione-Induced Edema in the Diabetes REduction Assessment with ramipril and rosiglitazone Medication (DREAM) Study. Bailey SD, et al. Diabetes Care, 2010 Jul 13. PMID 20628086.Investigation of the association of BMP gene variants with nephropathy in Type 1 diabetes mellitus. McKnight AJ, et al. Diabet Med, 2010 Jun. PMID 20546278.Expression of bone morphogenetic protein 7 in lung cancer and its biological impact on lung cancer cells. Chen J, et al. Anticancer Res, 2010 Apr. PMID 20530416.L-type voltage-dependent calcium channel alpha subunit 1C is a novel candidate gene associated with secondary hyperparathyroidism: an application of haplotype-based analysis for multiple linked single nucleotide polymorphisms. Yokoyama K, et al. Nephron Clin Pract, 2010. PMID 20424473.

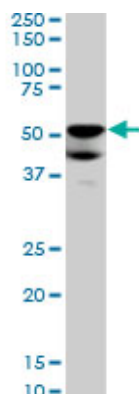
## Images



Antibody Reactive Against Recombinant Protein.Western Blot detection against Immunogen (73.15 KDa) .

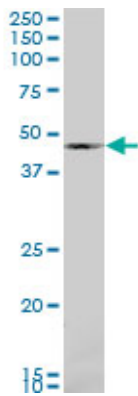


BMP7 monoclonal antibody (M03), clone S52. Western Blot analysis of BMP7 expression in human ovarian cancer.

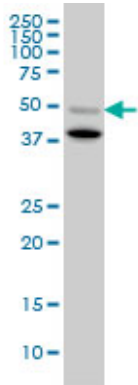


BMP7 monoclonal antibody (M03), clone S52. Western Blot analysis of BMP7 expression in A-549 ( (Cat # AT1305a )

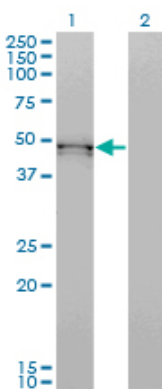
BMP7 monoclonal antibody (M03), clone S52. Western Blot analysis of BMP7 expression in C32 ( (Cat # AT1305a )



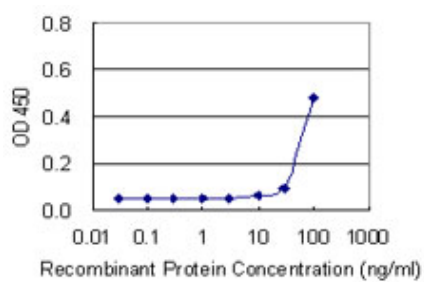
BMP7 monoclonal antibody (M03), clone S52. Western Blot analysis of BMP7 expression in Raw 264.7.



Western Blot analysis of BMP7 expression in transfected 293T cell line by BMP7 monoclonal antibody (M03), clone S52.



Lane 1: BMP7 transfected lysate(49.313 KDa).  
Lane 2: Non-transfected lysate.



Detection limit for recombinant GST tagged BMP7 is 10 ng/ml as a capture antibody.

Please note: All products are 'FOR RESEARCH USE ONLY. NOT FOR USE IN DIAGNOSTIC OR THERAPEUTIC PROCEDURES'.