

## BTBD1 Antibody (monoclonal) (M01)

Mouse monoclonal antibody raised against a partial recombinant BTBD1.

Catalog # AT1315a

### Product Information

---

|                          |                           |
|--------------------------|---------------------------|
| <b>Application</b>       | WB, E                     |
| <b>Primary Accession</b> | <a href="#">Q9H0C5</a>    |
| <b>Other Accession</b>   | <a href="#">NM_025238</a> |
| <b>Reactivity</b>        | Human                     |
| <b>Host</b>              | mouse                     |
| <b>Clonality</b>         | monoclonal                |
| <b>Isotype</b>           | IgG2a Kappa               |
| <b>Clone Names</b>       | 3E12                      |
| <b>Calculated MW</b>     | 52771                     |

### Additional Information

---

|                           |  |
|---------------------------|--|
| <b>Gene ID</b>            | 53339  |
| <b>Other Names</b>        | BTB/POZ domain-containing protein 1, Hepatitis C virus NS5A-transactivated protein 8, HCV NS5A-transactivated protein 8, BTBD1, C15orf1, NS5ATP8 |
| <b>Target/Specificity</b> | BTBD1 (NP_079514, 384 a.a. ~ 482 a.a) partial recombinant protein with GST tag. MW of the GST tag alone is 26 KDa.                               |
| <b>Dilution</b>           | WB~~1:500~1000 E~~N/A  |
| <b>Format</b>             | Clear, colorless solution in phosphate buffered saline, pH 7.2 .   |
| <b>Storage</b>            | Store at -20°C or lower. Aliquot to avoid repeated freezing and thawing.   |
| <b>Precautions</b>        | BTBD1 Antibody (monoclonal) (M01) is for research use only and not for use in diagnostic or therapeutic procedures.                              |

### Background

---

The C-terminus of the protein encoded by this gene binds topoisomerase I. The N-terminus contains a proline-rich region and a BTB/POZ domain (broad-complex, Tramtrack and bric a brac/Pox virus and Zinc finger), both of which are typically involved in protein-protein interactions. Subcellularly, the protein localizes to cytoplasmic bodies. Alternative splicing results in multiple transcript variants encoding different isoforms.

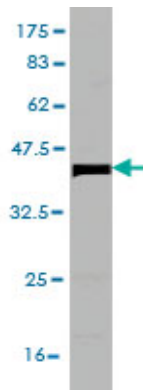
### References

---

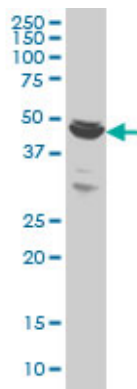
Defining the human deubiquitinating enzyme interaction landscape. Sowa ME, et al. Cell, 2009 Jul 23. PMID

19615732. Search for cellular partners of human papillomavirus type 16 E2 protein. Olejnik-Schmidt AK, et al. Arch Virol, 2008. PMID 18305892. The LIFEdb database in 2006. Mehrle A, et al. Nucleic Acids Res, 2006 Jan 1. PMID 16381901. From ORFeome to biology: a functional genomics pipeline. Wiemann S, et al. Genome Res, 2004 Oct. PMID 15489336. The status, quality, and expansion of the NIH full-length cDNA project: the Mammalian Gene Collection (MGC). Gerhard DS, et al. Genome Res, 2004 Oct. PMID 15489334.

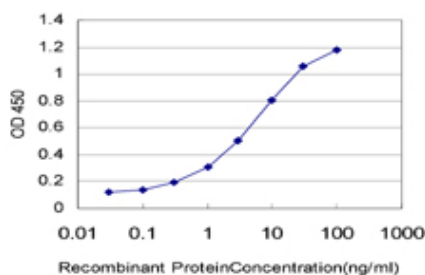
## Images



Antibody Reactive Against Recombinant Protein. Western Blot detection against Immunogen (36.63 KDa) .



BTBD1 monoclonal antibody (M01), clone 3E11 Western Blot analysis of BTBD1 expression in HeLa (Cat # AT1315a)



Detection limit for recombinant GST tagged BTBD1 is approximately 0.03ng/ml as a capture antibody.

Please note: All products are 'FOR RESEARCH USE ONLY. NOT FOR USE IN DIAGNOSTIC OR THERAPEUTIC PROCEDURES'.