

BUB1B Antibody (monoclonal) (M01)

Mouse monoclonal antibody raised against a partial recombinant BUB1B.

Catalog # AT1320a

Product Information

Application	WB, IHC, IF
Primary Accession	O60566
Other Accession	BC018739
Reactivity	Human
Host	mouse
Clonality	monoclonal
Isotype	IgG1 Kappa
Clone Names	2G9
Calculated MW	119545

Additional Information

Gene ID	701
Other Names	Mitotic checkpoint serine/threonine-protein kinase BUB1 beta, MAD3/BUB1-related protein kinase, hBUBR1, Mitotic checkpoint kinase MAD3L, Protein SSK1, BUB1B, BUBR1, MAD3L, SSK1
Target/Specificity	BUB1B (AAH18739, 1 a.a. ~ 130 a.a) partial recombinant protein with GST tag. MW of the GST tag alone is 26 KDa.
Dilution	WB~~1:500~1000 IHC~~1:100~500 IF~~1:50~200
Format	Clear, colorless solution in phosphate buffered saline, pH 7.2 .
Storage	Store at -20°C or lower. Aliquot to avoid repeated freezing and thawing.
Precautions	BUB1B Antibody (monoclonal) (M01) is for research use only and not for use in diagnostic or therapeutic procedures.

Background

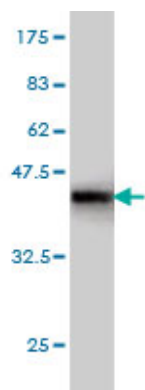
This gene encodes a kinase involved in spindle checkpoint function. The protein has been localized to the kinetochore and plays a role in the inhibition of the anaphase-promoting complex/cyclosome (APC/C), delaying the onset of anaphase and ensuring proper chromosome segregation. Impaired spindle checkpoint function has been found in many forms of cancer.

References

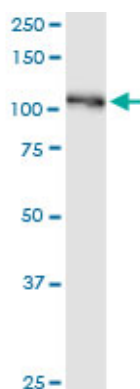
Molecular causes for BUBR1 dysfunction in the human cancer predisposition syndrome mosaic variegated

aneuploidy. Suijkerbuijk SJ, et al. Cancer Res, 2010 Jun 15. PMID 20516114. Spindle proteins in resected pancreatic head adenocarcinomas: BubR1 is an independent prognostic factor in pancreatobiliary-type tumours. Gladhaug IP, et al. Histopathology, 2010 Feb. PMID 20459534. A Large-scale genetic association study of esophageal adenocarcinoma risk. Liu CY, et al. Carcinogenesis, 2010 Jul. PMID 20453000. BUBR1 expression in benign oral lesions and squamous cell carcinomas: correlation with human papillomavirus. Lira RC, et al. Oncol Rep, 2010 Apr. PMID 20204288. LSD1 is required for chromosome segregation during mitosis. Lv S, et al. Eur J Cell Biol, 2010 Jul. PMID 20189264.

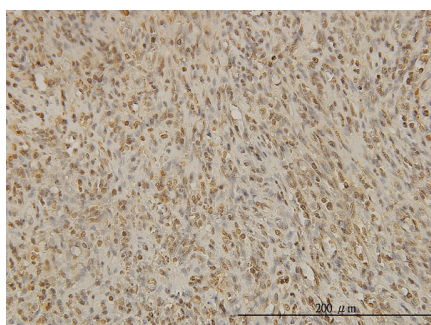
Images



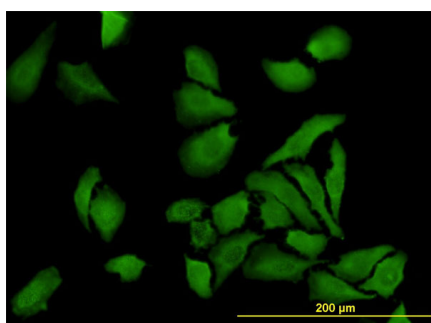
Antibody Reactive Against Recombinant Protein. Western Blot detection against Immunogen (39.93 KDa) .



BUB1B monoclonal antibody (M01), clone 2G9. Western Blot analysis of BUB1B expression in human spleen.



Immunoperoxidase of monoclonal antibody to BUB1B on formalin-fixed paraffin-embedded human spleen. [antibody concentration 1 ug/ml]



Immunofluorescence of monoclonal antibody to BUB1B on HeLa cell. [antibody concentration 10 ug/ml]

Please note: All products are 'FOR RESEARCH USE ONLY. NOT FOR USE IN DIAGNOSTIC OR THERAPEUTIC PROCEDURES'.