

C10orf7 Antibody (monoclonal) (M08)

Mouse monoclonal antibody raised against a full length recombinant C10orf7.

Catalog # AT1326a

Product Information

Application	WB, IHC, E
Primary Accession	O75794
Other Accession	BC009598
Reactivity	Human
Host	mouse
Clonality	monoclonal
Isotype	IgG2a Kappa
Clone Names	4B9
Calculated MW	39135

Additional Information

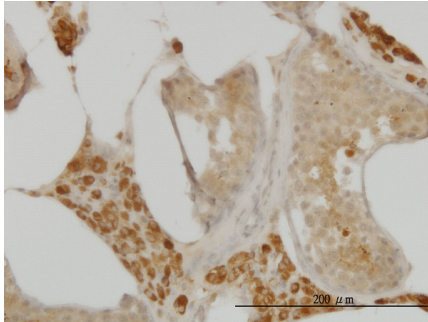
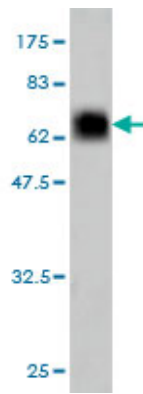
Gene ID	8872
Other Names	Cell division cycle protein 123 homolog, Protein D123, HT-1080, PZ32, CDC123, C10orf7, D123
Target/Specificity	C10orf7 (AAH09598, 1 a.a. ~ 336 a.a) full-length recombinant protein with GST tag. MW of the GST tag alone is 26 KDa.
Dilution	WB~~1:500~1000 IHC~~1:100~500 E~~N/A
Format	Clear, colorless solution in phosphate buffered saline, pH 7.2 .
Storage	Store at -20°C or lower. Aliquot to avoid repeated freezing and thawing.
Precautions	C10orf7 Antibody (monoclonal) (M08) is for research use only and not for use in diagnostic or therapeutic procedures.

References

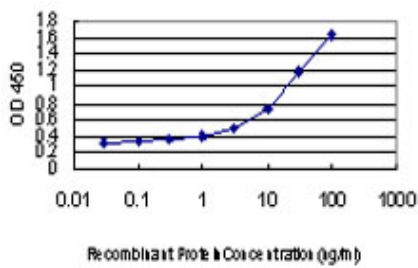
1.Integrated profiling of basal and luminal breast cancers.Adelaide J, Finetti P, Bekhouche I, Repellini L, Geneix J, Sir coulomb F, Charafe-Jauffret E, Cervera N, Desplans J, Parzy D, Schoenmakers E, Viens P, Jacquemier J, Birnbaum D, Bertucci F, Chaffanet M.Cancer Res. 2007 Dec 15;67(24):11565-75.

Images

Antibody Reactive Against Recombinant Protein.Western Blot detection against Immunogen (62.7 KDa) .



Immunoperoxidase of monoclonal antibody to C10orf7 on formalin-fixed paraffin-embedded human testis. [antibody concentration 3 ug/ml]



Detection limit for recombinant GST tagged C10orf7 is approximately 0.03ng/ml as a capture antibody.

Please note: All products are 'FOR RESEARCH USE ONLY. NOT FOR USE IN DIAGNOSTIC OR THERAPEUTIC PROCEDURES'.