

# C13orf1 Antibody (monoclonal) (M01)

Mouse monoclonal antibody raised against a partial recombinant C13orf1.

Catalog # AT1327a

## Product Information

---

<b>Application</b>	WB
<b>Primary Accession</b>	<a href="#">Q5W111</a>
<b>Other Accession</b>	<a href="#">NM_020456</a>
<b>Reactivity</b>	Human, Rat
<b>Host</b>	mouse
<b>Clonality</b>	monoclonal
<b>Isotype</b>	IgG1 Kappa
<b>Clone Names</b>	2G4
<b>Calculated MW</b>	21666

## Additional Information

---

<b>Gene ID</b>	57213
<b>Other Names</b>	SPRY domain-containing protein 7, Chronic lymphocytic leukemia deletion region gene 6 protein, CLL deletion region gene 6 protein, SPRYD7, C13orf1, CLLD6
<b>Target/Specificity</b>	C13orf1 (NP_065189, 97 a.a. ~ 196 a.a) partial recombinant protein with GST tag. MW of the GST tag alone is 26 KDa.
<b>Dilution</b>	WB~~1:500~1000
<b>Format</b>	Clear, colorless solution in phosphate buffered saline, pH 7.2 .
<b>Storage</b>	Store at -20°C or lower. Aliquot to avoid repeated freezing and thawing.
<b>Precautions</b>	C13orf1 Antibody (monoclonal) (M01) is for research use only and not for use in diagnostic or therapeutic procedures.

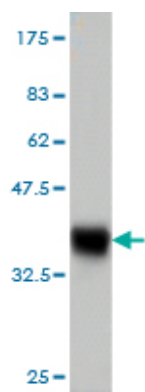
## References

---

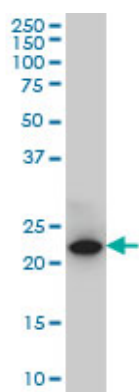
Diversification of transcriptional modulation: large-scale identification and characterization of putative alternative promoters of human genes. Kimura K, et al. Genome Res, 2006 Jan. PMID 16344560. Transcriptome analysis of human gastric cancer. Oh JH, et al. Mamm Genome, 2005 Dec. PMID 16341674. The status, quality, and expansion of the NIH full-length cDNA project: the Mammalian Gene Collection (MGC). Gerhard DS, et al. Genome Res, 2004 Oct. PMID 15489334. The DNA sequence and analysis of human chromosome 13. Dunham A, et al. Nature, 2004 Apr 1. PMID 15057823. Exploring proteomes and analyzing protein processing by mass spectrometric identification of sorted N-terminal peptides. Gevaert K, et al. Nat Biotechnol, 2003 May. PMID 12665801.

## Images

---



Antibody Reactive Against Recombinant Protein. Western Blot detection against Immunogen (36.74 KDa) .



C13orf1 monoclonal antibody (M01), clone 2G4 Western Blot analysis of C13orf1 expression in PC-12 ( (Cat # AT1327a )

Please note: All products are 'FOR RESEARCH USE ONLY. NOT FOR USE IN DIAGNOSTIC OR THERAPEUTIC PROCEDURES'.