

C13orf24 Antibody (monoclonal) (M02)

Mouse monoclonal antibody raised against a partial recombinant C13orf24.

Catalog # AT1328a

Product Information

| | |
|--------------------------|---------------------------|
| Application | WB, IHC, IF, E |
| Primary Accession | Q8WXW3 |
| Other Accession | NM_006346 |
| Reactivity | Human |
| Host | mouse |
| Clonality | monoclonal |
| Isotype | IgG1 Kappa |
| Clone Names | 7B7 |
| Calculated MW | 89805 |

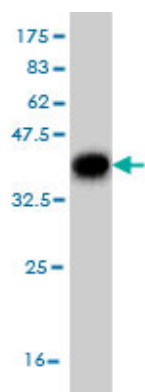
Additional Information

| | |
|---------------------------|--|
| Gene ID | 10464 |
| Other Names | Progesterone-induced-blocking factor 1, PIBF1, C13orf24, PIBF |
| Target/Specificity | C13orf24 (NP_006337, 660 a.a. ~ 755 a.a) partial recombinant protein with GST tag. MW of the GST tag alone is 26 KDa. |
| Dilution | WB~~1:500~1000 IHC~~1:100~500 IF~~1:50~200 E~~N/A |
| Format | Clear, colorless solution in phosphate buffered saline, pH 7.2 . |
| Storage | Store at -20°C or lower. Aliquot to avoid repeated freezing and thawing. |
| Precautions | C13orf24 Antibody (monoclonal) (M02) is for research use only and not for use in diagnostic or therapeutic procedures. |

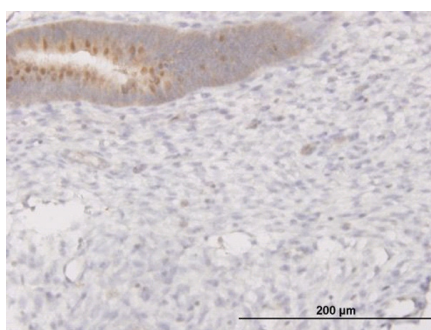
References

Genetic variants at CD28, PRDM1 and CD2/CD58 are associated with rheumatoid arthritis risk. Raychaudhuri S, et al. Nat Genet, 2009 Dec. PMID 19898481. Progesterone-induced blocking factor (PIBF) modulates cytokine production by lymphocytes from women with recurrent miscarriage or preterm delivery. Raghupathy R, et al. J Reprod Immunol, 2009 Jun. PMID 19371956. Progesterone - induced blocking factor (PIBF) and Th(1)/Th(2) cytokine in women with threatened spontaneous abortion. Hudi? I, et al. J Perinat Med, 2009. PMID 19290853. The progesterone-induced blocking factor modulates the balance of PKC and intracellular Ca. Kozma N, et al. Am J Reprod Immunol, 2006 Feb. PMID 16433831. The status, quality, and expansion of the NIH full-length cDNA project: the Mammalian Gene Collection (MGC). Gerhard DS, et al. Genome Res, 2004 Oct. PMID 15489334.

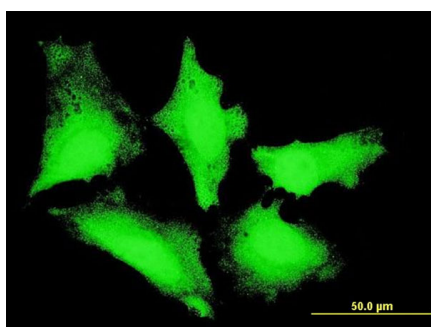
Images



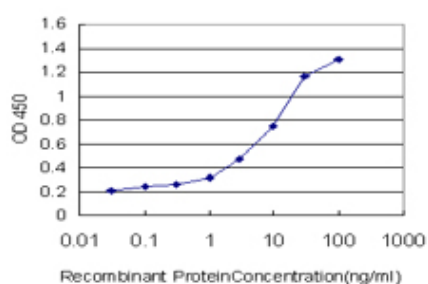
Antibody Reactive Against Recombinant Protein. Western Blot detection against Immunogen (36.3 KDa) .



Immunoperoxidase of monoclonal antibody to C13orf24 on formalin-fixed paraffin-embedded human endometrium. [antibody concentration 1 ug/ml]



Immunofluorescence of monoclonal antibody to PIBF1 on HeLa cell . [antibody concentration 10 ug/ml]



Detection limit for recombinant GST tagged C13orf24 is approximately 0.03ng/ml as a capture antibody.

Please note: All products are 'FOR RESEARCH USE ONLY. NOT FOR USE IN DIAGNOSTIC OR THERAPEUTIC PROCEDURES'.