

C15orf15 Antibody (monoclonal) (M01)

Mouse monoclonal antibody raised against a full length recombinant C15orf15.

Catalog # AT1329a

Product Information

Application	WB, IHC, IF
Primary Accession	Q9UHA3
Other Accession	BC005344
Reactivity	Human
Host	mouse
Clonality	monoclonal
Isotype	IgG1 kappa
Clone Names	2A10-1E5
Calculated MW	19621

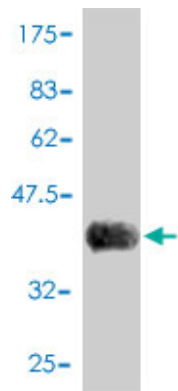
Additional Information

Gene ID	51187
Other Names	Probable ribosome biogenesis protein RLP24, Ribosomal L24 domain-containing protein 1, Ribosomal protein L24-like, RSL24D1, C15orf15, RPL24L
Target/Specificity	C15orf15 (AAH05344, 1 a.a. ~ 150 a.a) full-length recombinant protein with GST tag. MW of the GST tag alone is 26 KDa.
Dilution	WB~~1:500~1000 IHC~~1:100~500 IF~~1:50~200
Format	Clear, colorless solution in phosphate buffered saline, pH 7.2 .
Storage	Store at -20°C or lower. Aliquot to avoid repeated freezing and thawing.
Precautions	C15orf15 Antibody (monoclonal) (M01) is for research use only and not for use in diagnostic or therapeutic procedures.

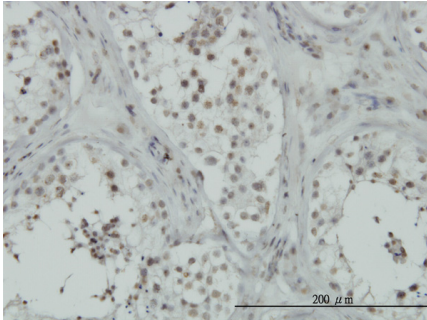
Background

This gene encodes a protein sharing a low level of sequence similarity with human ribosomal protein L24. Although this gene has been referred to as RPL24, L30, and 60S ribosomal protein L30 isolog in the sequence databases, it is distinct from the human genes officially named RPL24 (which itself has been referred to as ribosomal protein L30) and RPL30. The function of this gene is currently unknown. This gene utilizes alternative polyadenylation signals. [provided by RefSeq]

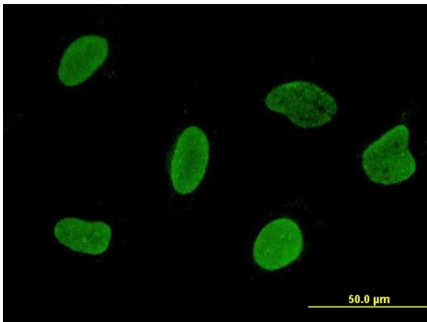
Images



Antibody Reactive Against Recombinant Protein. Western Blot detection against Immunogen (42.24 KDa) .



Immunoperoxidase of monoclonal antibody to C15orf15 on formalin-fixed paraffin-embedded human testis. [antibody concentration 1 ug/ml]



Immunofluorescence of monoclonal antibody to C15orf15 on HeLa cell . [antibody concentration 10 ug/ml]

Please note: All products are 'FOR RESEARCH USE ONLY. NOT FOR USE IN DIAGNOSTIC OR THERAPEUTIC PROCEDURES'.