

C1GALT1 Antibody (monoclonal) (M01)

Mouse monoclonal antibody raised against a partial recombinant C1GALT1.

Catalog # AT1334a

Product Information

Application	WB, IHC, E
Primary Accession	Q9NS00
Other Accession	NM_020156
Reactivity	Human
Host	mouse
Clonality	monoclonal
Isotype	IgG2a Kappa
Clone Names	1F1
Calculated MW	42203

Additional Information

Gene ID	56913
Other Names	Glycoprotein-N-acetylgalactosamine 3-beta-galactosyltransferase 1, B3Gal-T8, Core 1 O-glycan T-synthase, Core 1 UDP-galactose:N-acetylgalactosamine-alpha-R beta 1, 3-galactosyltransferase 1, Beta-1, 3-galactosyltransferase, Core 1 beta1, 3-galactosyltransferase 1, C1GalT1, Core 1 beta3-Gal-T1, C1GALT1
Target/Specificity	C1GALT1 (NP_064541, 264 a.a. ~ 363 a.a) partial recombinant protein with GST tag. MW of the GST tag alone is 26 KDa.
Dilution	WB~~1:500~1000 IHC~~1:100~500 E~~N/A
Format	Clear, colorless solution in phosphate buffered saline, pH 7.2 .
Storage	Store at -20°C or lower. Aliquot to avoid repeated freezing and thawing.
Precautions	C1GALT1 Antibody (monoclonal) (M01) is for research use only and not for use in diagnostic or therapeutic procedures.

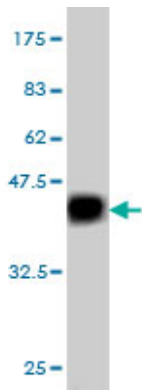
Background

The protein encoded by this gene generates the common core 1 O-glycan structure, Gal-beta-1-3GalNAc-R, by the transfer of Gal from UDP-Gal to GalNAc-alpha-1-R. Core 1 is a precursor for many extended mucin-type O-glycans on cell surface and secreted glycoproteins. Studies in mice suggest that this gene plays a key role in thrombopoiesis and kidney homeostasis.

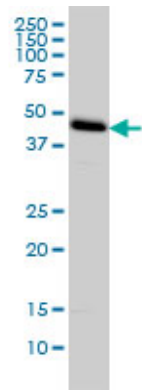
References

1.Association of cell surface mucins with galectin-3 contributes to the ocular surface epithelial barrier.Argueso P, Guzman-Aranguez A, Mantelli F, Cao Z, Ricciuto J, Panjwani N.J Biol Chem. 2009 Aug 21;284(34):23037-45. Epub 2009 Jun 25.

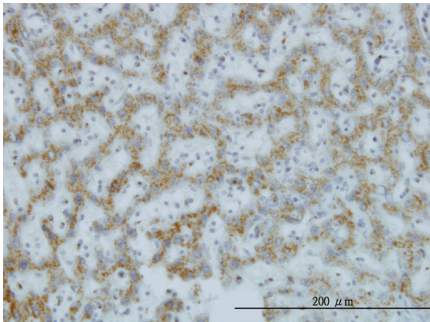
Images



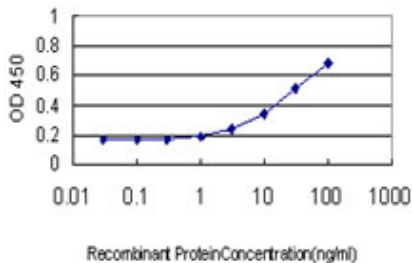
Antibody Reactive Against Recombinant Protein.Western Blot detection against Immunogen (36.74 KDa) .



C1GALT1 monoclonal antibody (M01), clone 1F1 Western Blot analysis of C1GALT1 expression in HeLa ((Cat # AT1334a)



Immunoperoxidase of monoclonal antibody to C1GALT1 on formalin-fixed paraffin-embedded human hepatocellular carcinoma. [antibody concentration 3 ug/ml]



Detection limit for recombinant GST tagged C1GALT1 is approximately 0.3ng/ml as a capture antibody.

Please note: All products are 'FOR RESEARCH USE ONLY. NOT FOR USE IN DIAGNOSTIC OR THERAPEUTIC PROCEDURES'.