

# C1orf19 Antibody (monoclonal) (M01)

Mouse monoclonal antibody raised against a partial recombinant C1orf19.

Catalog # AT1335a

## Product Information

---

<b>Application</b>	WB, IF, E
<b>Primary Accession</b>	<a href="#">Q8WW01</a>
<b>Other Accession</b>	<a href="#">NM_052965</a>
<b>Reactivity</b>	Human
<b>Host</b>	mouse
<b>Clonality</b>	monoclonal
<b>Isotype</b>	IgG1 Kappa
<b>Clone Names</b>	8C7
<b>Calculated MW</b>	18641

## Additional Information

---

<b>Gene ID</b>	116461
<b>Other Names</b>	tRNA-splicing endonuclease subunit Sen15, SEN15 homolog, HsSEN15, tRNA-intron endonuclease Sen15, TSEN15, C1orf19, SEN15
<b>Target/Specificity</b>	C1orf19 (NP_443197, 72 a.a. ~ 170 a.a) partial recombinant protein with GST tag. MW of the GST tag alone is 26 KDa.
<b>Dilution</b>	WB~~1:500~1000 IF~~1:50~200 E~~N/A
<b>Format</b>	Clear, colorless solution in phosphate buffered saline, pH 7.2 .
<b>Storage</b>	Store at -20°C or lower. Aliquot to avoid repeated freezing and thawing.
<b>Precautions</b>	C1orf19 Antibody (monoclonal) (M01) is for research use only and not for use in diagnostic or therapeutic procedures.

## Background

---

tRNA splicing is a fundamental process required for cell growth and division. SEN15 is a subunit of the tRNA splicing endonuclease, which catalyzes the removal of introns, the first step in tRNA splicing (Paushkin et al., 2004 [PubMed 15109492]).

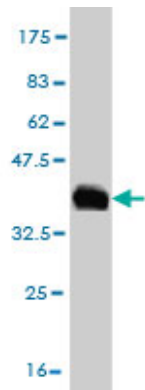
## References

---

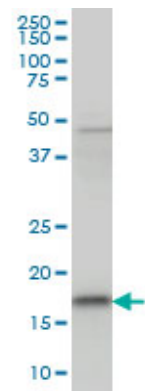
The role of height-associated loci identified in genome wide association studies in the determination of pediatric stature. Zhao J, et al. BMC Med Genet, 2010 Jun 14. PMID 20546612. Many sequence variants affecting diversity of adult human height. Gudbjartsson DF, et al. Nat Genet, 2008 May. PMID

18391951.Three-dimensional structure determined for a subunit of human tRNA splicing endonuclease (Sen15) reveals a novel dimeric fold. Song J, et al. J Mol Biol, 2007 Feb 9. PMID 17166513.Identification of intrahepatic cholangiocarcinoma related genes by comparison with normal liver tissues using expressed sequence tags. Wang AG, et al. Biochem Biophys Res Commun, 2006 Jul 7. PMID 16712791.Transcriptome analysis of human gastric cancer. Oh JH, et al. Mamm Genome, 2005 Dec. PMID 16341674.

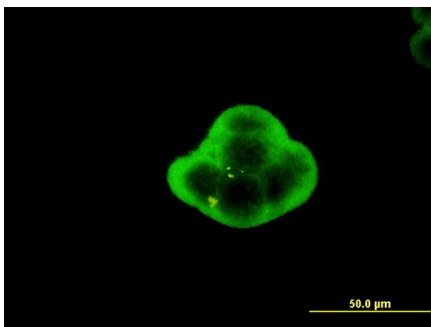
Images



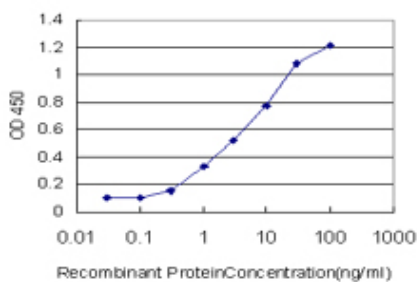
Antibody Reactive Against Recombinant Protein.Western Blot detection against Immunogen (36.63 KDa) .



C1orf19 monoclonal antibody (M01), clone 8C7 Western Blot analysis of C1orf19 expression in MCF-7 ( (Cat # AT1335a )



Immunofluorescence of monoclonal antibody to C1orf19 on MCF-7 cell . [antibody concentration 10 ug/ml]



Detection limit for recombinant GST tagged C1orf19 is approximately 0.3ng/ml as a capture antibody.

Please note: All products are 'FOR RESEARCH USE ONLY. NOT FOR USE IN DIAGNOSTIC OR THERAPEUTIC PROCEDURES'.