

# C1orf38 Antibody (monoclonal) (M01)

Mouse monoclonal antibody raised against a full length recombinant C1orf38.

Catalog # AT1337a

## Product Information

---

<b>Application</b>	E
<b>Primary Accession</b>	<a href="#">Q5TEJ8</a>
<b>Other Accession</b>	<a href="#">BC031655</a>
<b>Reactivity</b>	Human
<b>Host</b>	mouse
<b>Clonality</b>	monoclonal
<b>Isotype</b>	IgG1 Kappa
<b>Clone Names</b>	1C3
<b>Calculated MW</b>	72049

## Additional Information

---

<b>Gene ID</b>	9473
<b>Other Names</b>	Protein THEMIS2, Induced by contact to basement membrane 1 protein, Protein ICB-1, Thymocyte-expressed molecule involved in selection protein 2, THEMIS2, C1orf38, ICB1
<b>Target/Specificity</b>	C1orf38 (AAH31655, 1 a.a. ~ 111 a.a) full-length recombinant protein with GST tag. MW of the GST tag alone is 26 KDa.
<b>Dilution</b>	E~~N/A
<b>Format</b>	Clear, colorless solution in phosphate buffered saline, pH 7.2 .
<b>Storage</b>	Store at -20°C or lower. Aliquot to avoid repeated freezing and thawing.
<b>Precautions</b>	C1orf38 Antibody (monoclonal) (M01) is for research use only and not for use in diagnostic or therapeutic procedures.

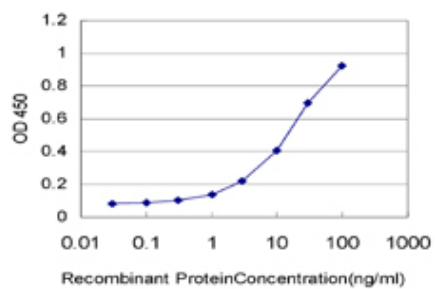
## References

---

Personalized smoking cessation: interactions between nicotine dose, dependence and quit-success genotype score. Rose JE, et al. Mol Med, 2010 Jul-Aug. PMID 20379614. Knockdown of ICB-1 gene enhanced estrogen responsiveness of ovarian and breast cancer cells. Konwisorz A, et al. Endocr Relat Cancer, 2010 Mar. PMID 19942713. Single nucleotide polymorphisms in human gene icb-1 and breast cancer susceptibility. Springwald A, et al. Cancer Invest, 2009 Jul. PMID 19308812. The DNA sequence and biological annotation of human chromosome 1. Gregory SG, et al. Nature, 2006 May 18. PMID 16710414. Expression of icb-1 gene is interferon-gamma inducible in breast and ovarian cancer cell lines and affects the IFN gamma-response of SK-OV-3 ovarian cancer cells. Treeck O, et al. Cytokine, 2005 Nov 3. PMID 16219472.

## Images

---



Detection limit for recombinant GST tagged C1orf38 is approximately 0.3ng/ml as a capture antibody.

Please note: All products are 'FOR RESEARCH USE ONLY. NOT FOR USE IN DIAGNOSTIC OR THERAPEUTIC PROCEDURES'.