

# C1QTNF2 Antibody (monoclonal) (M01)

Mouse monoclonal antibody raised against a full length recombinant C1QTNF2.

Catalog # AT1339a

## Product Information

---

Application	WB
Primary Accession	<a href="#">Q9BXJ5</a>
Other Accession	<a href="#">BC011699</a>
Reactivity	Human
Host	mouse
Clonality	monoclonal
Isotype	IgG2a kappa
Clone Names	1D7-2C7
Calculated MW	29952

## Additional Information

---

Gene ID	114898
Other Names	Complement C1q tumor necrosis factor-related protein 2, C1QTNF2, CTRP2
Target/Specificity	C1QTNF2 (AAH11699.1, 16 a.a. ~ 285 a.a) full-length recombinant protein with GST tag. MW of the GST tag alone is 26 KDa.
Dilution	WB~~1:500~1000
Format	Clear, colorless solution in phosphate buffered saline, pH 7.2 .
Storage	Store at -20°C or lower. Aliquot to avoid repeated freezing and thawing.
Precautions	C1QTNF2 Antibody (monoclonal) (M01) is for research use only and not for use in diagnostic or therapeutic procedures.

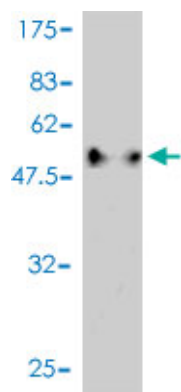
## References

---

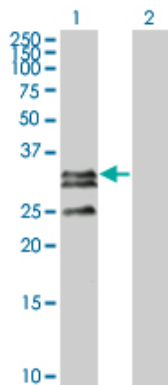
The status, quality, and expansion of the NIH full-length cDNA project: the Mammalian Gene Collection (MGC). Gerhard DS, et al. Genome Res, 2004 Oct. PMID 15489334. The secreted protein discovery initiative (SPDI), a large-scale effort to identify novel human secreted and transmembrane proteins: a bioinformatics assessment. Clark HF, et al. Genome Res, 2003 Oct. PMID 12975309. Generation and initial analysis of more than 15,000 full-length human and mouse cDNA sequences. Strausberg RL, et al. Proc Natl Acad Sci U S A, 2002 Dec 24. PMID 12477932.

## Images

---



Antibody Reactive Against Recombinant Protein. Western Blot detection against Immunogen (55.44 KDa) .



Western Blot analysis of C1QTNF2 expression in transfected 293T cell line by C1QTNF2 monoclonal antibody (M01), clone 1D7-2C7.

Lane 1: C1QTNF2 transfected lysate(32.775 KDa).  
Lane 2: Non-transfected lysate.

Please note: All products are 'FOR RESEARCH USE ONLY. NOT FOR USE IN DIAGNOSTIC OR THERAPEUTIC PROCEDURES'.