

C20orf102 Antibody (monoclonal) (M01)

Mouse monoclonal antibody raised against a full length recombinant C20orf102.

Catalog # AT1340a

Product Information

Application	WB, E
Primary Accession	Q96N03
Other Accession	BC033818
Reactivity	Human
Host	mouse
Clonality	monoclonal
Isotype	IgG1 Kappa
Clone Names	3B9
Calculated MW	22349

Additional Information

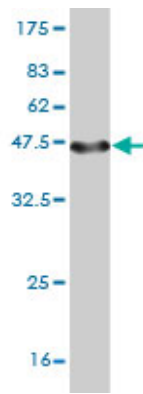
Gene ID	128434
Other Names	V-set and transmembrane domain-containing protein 2-like protein, VSTM2L, C20orf102
Target/Specificity	C20orf102 (AAH33818.1, 25 a.a. ~ 204 a.a) full-length recombinant protein with GST tag. MW of the GST tag alone is 26 KDa.
Dilution	WB~~1:500~1000 E~~N/A
Format	Clear, colorless solution in phosphate buffered saline, pH 7.2 .
Storage	Store at -20°C or lower. Aliquot to avoid repeated freezing and thawing.
Precautions	C20orf102 Antibody (monoclonal) (M01) is for research use only and not for use in diagnostic or therapeutic procedures.

References

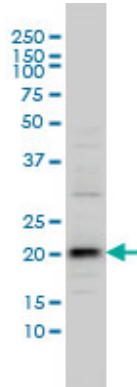
1.EXTRACELLULAR AND MEMBRANE-ASSOCIATED PROSTATE CANCER MARKERSKlee, George G. ;Vasmatzis, George;Kosari, Farhad;Klee, Eric W.FreshPatents.com

Images

Antibody Reactive Against Recombinant Protein.Western Blot detection against Immunogen (45.54 KDa) .

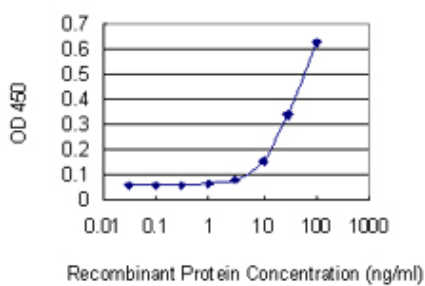
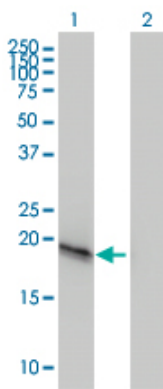


C20orf102 monoclonal antibody (M01), clone 3B9
Western Blot analysis of C20orf102 expression in IMR-32 (Cat # AT1340a)



Western Blot analysis of C20orf102 expression in transfected 293T cell line by C20orf102 monoclonal antibody (M01), clone 3B9.

Lane 1: C20orf102 transfected lysate(22 KDa).
Lane 2: Non-transfected lysate.



Detection limit for recombinant GST tagged VSTM2L is 3 ng/ml as a capture antibody.

Please note: All products are 'FOR RESEARCH USE ONLY. NOT FOR USE IN DIAGNOSTIC OR THERAPEUTIC PROCEDURES'.