

## C21orf33 Antibody (monoclonal) (M01)

Mouse monoclonal antibody raised against a partial recombinant C21orf33.

Catalog # AT1343a

### Product Information

---

<b>Application</b>	WB, IHC, IF, E
<b>Primary Accession</b>	<a href="#">P30042</a>
<b>Other Accession</b>	<a href="#">NM_004649</a>
<b>Reactivity</b>	Human
<b>Host</b>	mouse
<b>Clonality</b>	monoclonal
<b>Isotype</b>	IgG1 Kappa
<b>Clone Names</b>	1F5

### Additional Information

---

<b>Other Names</b>	ES1 protein homolog, mitochondrial, Protein GT335, Protein KNP-I, C21orf33, HES1, KNPI
<b>Target/Specificity</b>	C21orf33 (NP_004640, 188 a.a. ~ 268 a.a) partial recombinant protein with GST tag. MW of the GST tag alone is 26 KDa.
<b>Dilution</b>	WB~~1:500~1000 IHC~~1:100~500 IF~~1:50~200 E~~N/A
<b>Format</b>	Clear, colorless solution in phosphate buffered saline, pH 7.2 .
<b>Storage</b>	Store at -20°C or lower. Aliquot to avoid repeated freezing and thawing.
<b>Precautions</b>	C21orf33 Antibody (monoclonal) (M01) is for research use only and not for use in diagnostic or therapeutic procedures.

### Background

---

This gene encodes a potential mitochondrial protein that is a member of the DJ-1/PfpI gene family. This protein is overexpressed in fetal Down syndrome brain. Alternate splicing results in multiple transcript variants.

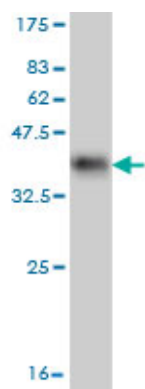
### References

---

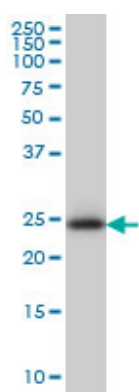
A human protein-protein interaction network: a resource for annotating the proteome. Stelzl U, et al. Cell, 2005 Sep 23. PMID 16169070. The status, quality, and expansion of the NIH full-length cDNA project: the Mammalian Gene Collection (MGC). Gerhard DS, et al. Genome Res, 2004 Oct. PMID 15489334. Sequence comparison of human and mouse genes reveals a homologous block structure in the promoter regions. Suzuki Y, et al. Genome Res, 2004 Sep. PMID 15342556. Expression of cystathionine beta-synthase, pyridoxal kinase, and ES1 protein homolog (mitochondrial precursor) in fetal Down syndrome brain. Shin JH, et al. Neurochem Int, 2004 Jul. PMID 15082224. Generation and initial analysis of more than 15,000 full-length

human and mouse cDNA sequences. Strausberg RL, et al. Proc Natl Acad Sci U S A, 2002 Dec 24. PMID 12477932.

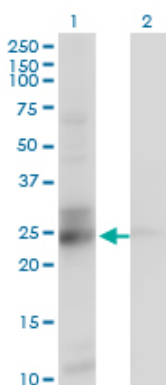
## Images



Antibody Reactive Against Recombinant Protein. Western Blot detection against Immunogen (34.65 KDa) .

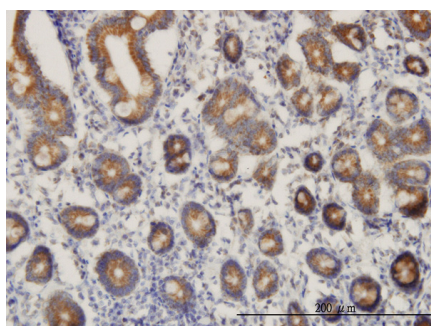


C21orf33 monoclonal antibody (M01), clone 1F5 Western Blot analysis of C21orf33 expression in HeLa (Cat # AT1343a)



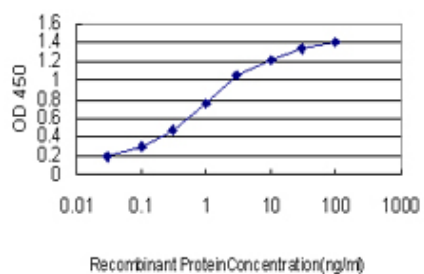
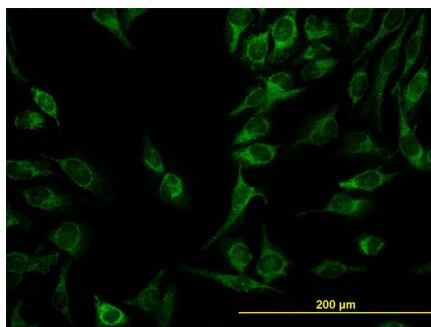
Western Blot analysis of C21orf33 expression in transfected 293T cell line by C21orf33 monoclonal antibody (M01), clone 1F5.

Lane 1: C21orf33 transfected lysate(28.1 KDa).  
Lane 2: Non-transfected lysate.



Immunoperoxidase of monoclonal antibody to C21orf33 on formalin-fixed paraffin-embedded human small Intestine. [antibody concentration 3 ug/ml]

Immunofluorescence of monoclonal antibody to C21orf33 on HeLa cell. [antibody concentration 10 ug/ml]



Detection limit for recombinant GST tagged C21orf33 is approximately 0.03ng/ml as a capture antibody.

Please note: All products are 'FOR RESEARCH USE ONLY. NOT FOR USE IN DIAGNOSTIC OR THERAPEUTIC PROCEDURES'.