

## C6orf115 Antibody (monoclonal) (M01)

Mouse monoclonal antibody raised against a full length recombinant C6orf115.

Catalog # AT1347a

### Product Information

---

<b>Application</b>	WB, E
<b>Primary Accession</b>	<a href="#">Q9P1F3</a>
<b>Other Accession</b>	<a href="#">BC014953</a>
<b>Reactivity</b>	Human
<b>Host</b>	mouse
<b>Clonality</b>	monoclonal
<b>Isotype</b>	IgG1 kappa
<b>Clone Names</b>	1G12-1D7
<b>Calculated MW</b>	9056

### Additional Information

---

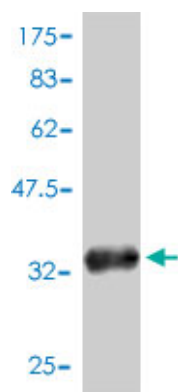
<b>Gene ID</b>	58527
<b>Other Names</b>	Costars family protein ABRACL, ABRA C-terminal-like protein, ABRACL, C6orf115
<b>Target/Specificity</b>	C6orf115 (AAH14953, 1 a.a. ~ 81 a.a) full-length recombinant protein with GST tag. MW of the GST tag alone is 26 KDa.
<b>Dilution</b>	WB~~1:500~1000 E~~N/A
<b>Format</b>	Clear, colorless solution in phosphate buffered saline, pH 7.2 .
<b>Storage</b>	Store at -20°C or lower. Aliquot to avoid repeated freezing and thawing.
<b>Precautions</b>	C6orf115 Antibody (monoclonal) (M01) is for research use only and not for use in diagnostic or therapeutic procedures.

### References

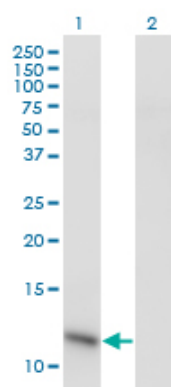
---

A proteomic analysis of human hemodialysis fluid. Molina H, et al. Mol Cell Proteomics, 2005 May. PMID 15723814. The status, quality, and expansion of the NIH full-length cDNA project: the Mammalian Gene Collection (MGC). Gerhard DS, et al. Genome Res, 2004 Oct. PMID 15489334. Exploring proteomes and analyzing protein processing by mass spectrometric identification of sorted N-terminal peptides. Gevaert K, et al. Nat Biotechnol, 2003 May. PMID 12665801. Generation and initial analysis of more than 15,000 full-length human and mouse cDNA sequences. Strausberg RL, et al. Proc Natl Acad Sci U S A, 2002 Dec 24. PMID 12477932. Cloning and functional analysis of cDNAs with open reading frames for 300 previously undefined genes expressed in CD34+ hematopoietic stem/progenitor cells. Zhang QH, et al. Genome Res, 2000 Oct. PMID 11042152.

## Images

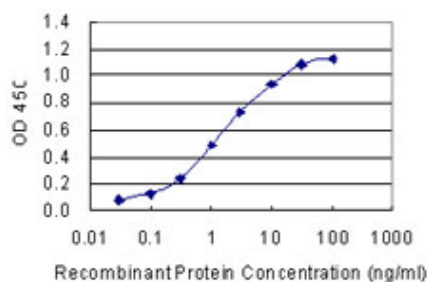


Antibody Reactive Against Recombinant Protein. Western Blot detection against Immunogen (34.65 KDa) .



Western Blot analysis of C6orf115 expression in transfected 293T cell line by C6orf115 monoclonal antibody (M01), clone 1G12-1D7.

Lane 1: C6orf115 transfected lysate(9.1 KDa).  
Lane 2: Non-transfected lysate.



Detection limit for recombinant GST tagged C6orf115 is approximately 0.1 ng/ml as a capture antibody.

Please note: All products are 'FOR RESEARCH USE ONLY. NOT FOR USE IN DIAGNOSTIC OR THERAPEUTIC PROCEDURES'.