

## C6orf139 Antibody (monoclonal) (M01)

Mouse monoclonal antibody raised against a full length recombinant C6orf139.

Catalog # AT1348a

### Product Information

---

<b>Application</b>	WB, IF, E
<b>Primary Accession</b>	<a href="#">Q7L2Z9</a>
<b>Other Accession</b>	<a href="#">BC016279</a>
<b>Reactivity</b>	Human
<b>Host</b>	mouse
<b>Clonality</b>	monoclonal
<b>Isotype</b>	IgG1 kappa
<b>Clone Names</b>	2B5-2D12
<b>Calculated MW</b>	30595

### Additional Information

---

<b>Gene ID</b>	55166
<b>Other Names</b>	Centromere protein Q, CENP-Q, CENPQ, C6orf139
<b>Target/Specificity</b>	C6orf139 (AAH16279.2, 1 a.a. ~ 268 a.a) full-length recombinant protein with GST tag. MW of the GST tag alone is 26 KDa.
<b>Dilution</b>	WB~~1:500~1000 IF~~1:50~200 E~~N/A
<b>Format</b>	Clear, colorless solution in phosphate buffered saline, pH 7.2 .
<b>Storage</b>	Store at -20°C or lower. Aliquot to avoid repeated freezing and thawing.
<b>Precautions</b>	C6orf139 Antibody (monoclonal) (M01) is for research use only and not for use in diagnostic or therapeutic procedures.

### Background

---

CENPQ is a subunit of a CENPH (MIM 605607)-CENPI (MIM 300065)-associated centromeric complex that targets CENPA (MIM 117139) to centromeres and is required for proper kinetochore function and mitotic progression (Okada et al., 2006 [PubMed 16622420]).

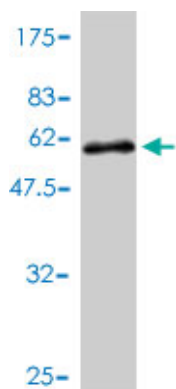
### References

---

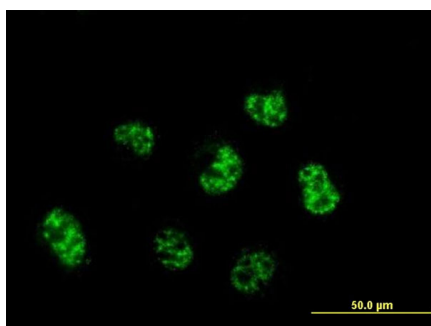
The CENP-H-I complex is required for the efficient incorporation of newly synthesized CENP-A into centromeres. Okada M, et al. Nat Cell Biol, 2006 May. PMID 16622420. The human CENP-A centromeric nucleosome-associated complex. Foltz DR, et al. Nat Cell Biol, 2006 May. PMID 16622419. The status, quality, and expansion of the NIH full-length cDNA project: the Mammalian Gene Collection (MGC). Gerhard DS, et

al. Genome Res, 2004 Oct. PMID 15489334. Complete sequencing and characterization of 21,243 full-length human cDNAs. Ota T, et al. Nat Genet, 2004 Jan. PMID 14702039. The DNA sequence and analysis of human chromosome 6. Mungall AJ, et al. Nature, 2003 Oct 23. PMID 14574404.

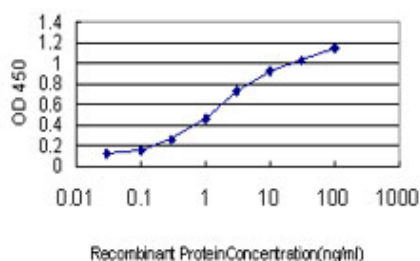
## Images



Antibody Reactive Against Recombinant Protein. Western Blot detection against Immunogen (55.22 KDa) .



Immunofluorescence of monoclonal antibody to C6orf139 on HeLa cell . [antibody concentration 10 ug/ml]



Detection limit for recombinant GST tagged C6orf139 is approximately 0.03ng/ml as a capture antibody.

Please note: All products are 'FOR RESEARCH USE ONLY. NOT FOR USE IN DIAGNOSTIC OR THERAPEUTIC PROCEDURES'.