

CAB39L Antibody (monoclonal) (M01)

Mouse monoclonal antibody raised against a full length recombinant CAB39L.

Catalog # AT1360a

Product Information

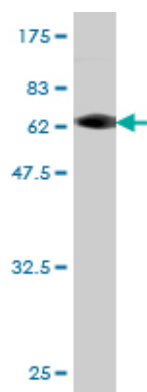
Application	WB, IHC
Primary Accession	Q9H9S4
Other Accession	BC010993
Reactivity	Human
Host	mouse
Clonality	monoclonal
Isotype	IgG1 kappa
Clone Names	3B11-1A4
Calculated MW	39088

Additional Information

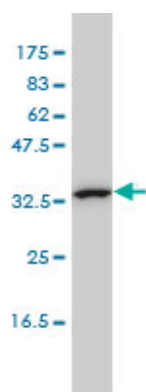
Gene ID	81617
Other Names	Calcium-binding protein 39-like, Antigen MLAA-34, MO25beta, Mo25-like protein, CAB39L
Target/Specificity	CAB39L (AAH10993, 1 a.a. ~ 337 a.a) full-length recombinant protein with GST tag. MW of the GST tag alone is 26 KDa.
Dilution	WB~~1:500~1000 IHC~~1:100~500
Format	Clear, colorless solution in phosphate buffered saline, pH 7.2 .
Storage	Store at -20°C or lower. Aliquot to avoid repeated freezing and thawing.
Precautions	CAB39L Antibody (monoclonal) (M01) is for research use only and not for use in diagnostic or therapeutic procedures.

References

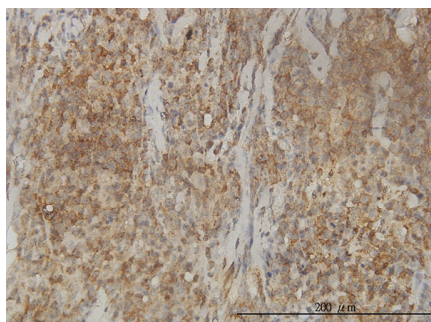
Personalized smoking cessation: interactions between nicotine dose, dependence and quit-success genotype score. Rose JE, et al. Mol Med, 2010 Jul-Aug. PMID 20379614. Identification and functional characterization of the novel acute monocytic leukemia associated antigen MLAA-34. Zhang PY, et al. Cancer Immunol Immunother, 2009 Feb. PMID 18592235. Large-scale mapping of human protein-protein interactions by mass spectrometry. Ewing RM, et al. Mol Syst Biol, 2007. PMID 17353931. Diversification of transcriptional modulation: large-scale identification and characterization of putative alternative promoters of human genes. Kimura K, et al. Genome Res, 2006 Jan. PMID 16344560. AMP-activated protein kinase: ancient energy gauge provides clues to modern understanding of metabolism. Kahn BB, et al. Cell Metab, 2005 Jan. PMID 16054041.



Antibody Reactive Against Recombinant Protein. Western Blot detection against Immunogen (62.81 KDa) .



CAB39L monoclonal antibody (M01), clone 3B11-1A4
Western Blot analysis of CAB39L expression in K-562 (Cat # AT1360a)



Immunoperoxidase of monoclonal antibody to CAB39L on formalin-fixed paraffin-embedded human lymphoma tissue. [antibody concentration 3 ug/ml]

Please note: All products are 'FOR RESEARCH USE ONLY. NOT FOR USE IN DIAGNOSTIC OR THERAPEUTIC PROCEDURES'.