

## CAP2 Antibody (monoclonal) (M01)

Mouse monoclonal antibody raised against a full length recombinant CAP2.

Catalog # AT1386a

### Product Information

---

<b>Application</b>	WB, IF, E
<b>Primary Accession</b>	<a href="#">P40123</a>
<b>Other Accession</b>	<a href="#">BC008481</a>
<b>Reactivity</b>	Human
<b>Host</b>	mouse
<b>Clonality</b>	monoclonal
<b>Isotype</b>	IgG1 kappa
<b>Clone Names</b>	3G9-1A5
<b>Calculated MW</b>	52824

### Additional Information

---

<b>Gene ID</b>	10486
<b>Other Names</b>	Adenylyl cyclase-associated protein 2, CAP 2, CAP2
<b>Target/Specificity</b>	CAP2 (AAH08481, 1 a.a. ~ 477 a.a) full-length recombinant protein with GST tag. MW of the GST tag alone is 26 KDa.
<b>Dilution</b>	WB~~1:500~1000 IF~~1:50~200 E~~N/A
<b>Format</b>	Clear, colorless solution in phosphate buffered saline, pH 7.2 .
<b>Storage</b>	Store at -20°C or lower. Aliquot to avoid repeated freezing and thawing.
<b>Precautions</b>	CAP2 Antibody (monoclonal) (M01) is for research use only and not for use in diagnostic or therapeutic procedures.

### Background

---

This gene was identified by its similarity to the gene for human adenylyl cyclase-associated protein. The function of the protein encoded by this gene is unknown. However, the protein appears to be able to interact with adenylyl cyclase-associated protein and actin.

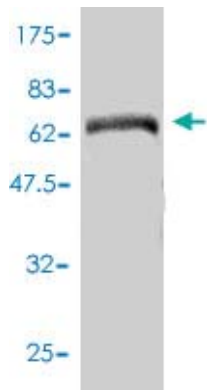
### References

---

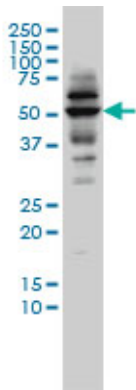
Many sequence variants affecting diversity of adult human height. Gudbjartsson DF, et al. Nat Genet, 2008 May. PMID 18391951. Overexpression of cyclase-associated protein 2 in multistage hepatocarcinogenesis. Shibata R, et al. Clin Cancer Res, 2006 Sep 15. PMID 17000669. The status, quality, and expansion of the NIH full-length cDNA project: the Mammalian Gene Collection (MGC). Gerhard DS, et al. Genome Res, 2004 Oct.

PMID 15489334.Functional proteomics mapping of a human signaling pathway. Colland F, et al. Genome Res, 2004 Jul. PMID 15231748.Generation and initial analysis of more than 15,000 full-length human and mouse cDNA sequences. Strausberg RL, et al. Proc Natl Acad Sci U S A, 2002 Dec 24. PMID 12477932.

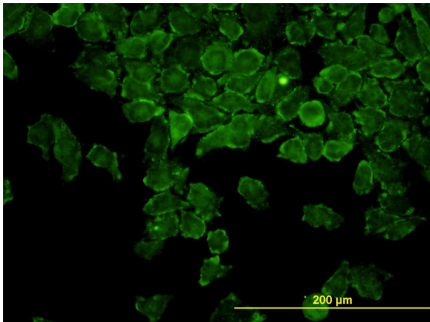
Images



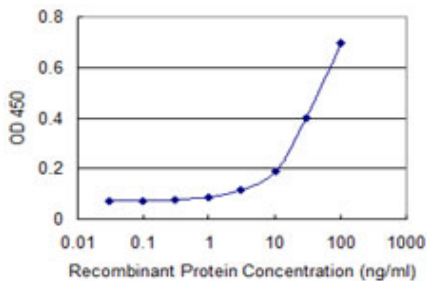
Antibody Reactive Against Recombinant Protein.Western Blot detection against Immunogen (78.21 KDa) .



CAP2 monoclonal antibody (M01), clone 3G9-1A5 Western Blot analysis of CAP2 expression in C32 ( (Cat # AT1386a )



Immunofluorescence of monoclonal antibody to CAP2 on HeLa cell. [antibody concentration 10 ug/ml]



Detection limit for recombinant GST tagged CAP2 is approximately 10ng/ml as a capture antibody.

Please note: All products are 'FOR RESEARCH USE ONLY. NOT FOR USE IN DIAGNOSTIC OR THERAPEUTIC PROCEDURES'.