

CAPG Antibody (monoclonal) (M01)

Mouse monoclonal antibody raised against a full length recombinant CAPG.

Catalog # AT1387a

Product Information

Application	WB, IF, E
Primary Accession	P40121
Other Accession	BC000728
Reactivity	Human
Host	mouse
Clonality	monoclonal
Isotype	IgG1 kappa
Clone Names	1F1
Calculated MW	38499

Additional Information

Gene ID	822
Other Names	Macrophage-capping protein, Actin regulatory protein CAP-G, CAPG, AFCP, MCP
Target/Specificity	CAPG (AAH00728.1, 1 a.a. ~ 348 a.a) full-length recombinant protein with GST tag. MW of the GST tag alone is 26 KDa.
Dilution	WB~~1:500~1000 IF~~1:50~200 E~~N/A
Format	Clear, colorless solution in phosphate buffered saline, pH 7.2 .
Storage	Store at -20°C or lower. Aliquot to avoid repeated freezing and thawing.
Precautions	CAPG Antibody (monoclonal) (M01) is for research use only and not for use in diagnostic or therapeutic procedures.

Background

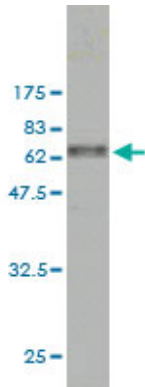
This gene encodes a member of the gelsolin/villin family of actin-regulatory proteins. The encoded protein reversibly blocks the barbed ends of F-actin filaments in a Ca²⁺ and phosphoinositide-regulated manner, but does not sever preformed actin filaments. By capping the barbed ends of actin filaments, the encoded protein contributes to the control of actin-based motility in non-muscle cells. Alternatively spliced transcript variants have been observed, but have not been fully described.

References

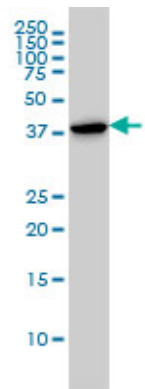
Proteomic study of macrophages exposed to oxLDL identifies a CAPG polymorphism associated with carotid

atherosclerosis. Burillo E, et al. Atherosclerosis, 2009 Nov. PMID 19439302. Proteomic analysis of the stroma-related proteins in nasopharyngeal carcinoma and normal nasopharyngeal epithelial tissues. Li MX, et al. Med Oncol, 2010 Mar. PMID 19242827. Up-regulation of two actin-associated proteins prompts pulmonary artery smooth muscle cell migration under hypoxia. Zhang R, et al. Am J Respir Cell Mol Biol, 2009 Oct. PMID 19188659. The actin-capping protein CapG localizes to microtubule-dependent organelles during the cell cycle. Hubert T, et al. Biochem Biophys Res Commun, 2009 Feb 27. PMID 19166812. Integrin $\alpha 6 \beta 4$ controls the expression of genes associated with cell motility, invasion, and metastasis, including S100A4/metastasin. Chen M, et al. J Biol Chem, 2009 Jan 16. PMID 19011242.

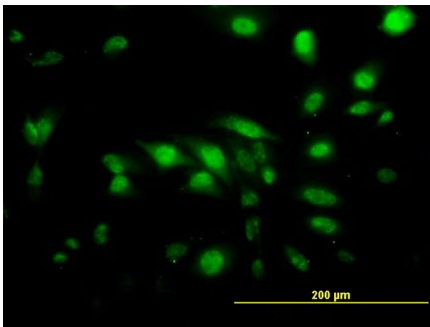
Images



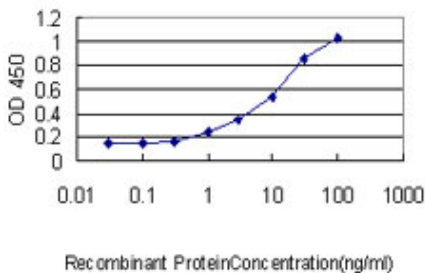
Antibody Reactive Against Recombinant Protein. Western Blot detection against Immunogen (63.8 KDa) .



CAPG monoclonal antibody (M01), clone 1F1 Western Blot analysis of CAPG expression in HL-60 ((Cat # AT1387a)



Immunofluorescence of monoclonal antibody to CAPG on HeLa cell. [antibody concentration 10 ug/ml]



Detection limit for recombinant GST tagged CAPG is approximately 0.1ng/ml as a capture antibody.

Please note: All products are 'FOR RESEARCH USE ONLY. NOT FOR USE IN DIAGNOSTIC OR THERAPEUTIC PROCEDURES'.