

## CAPS Antibody (monoclonal) (M01)

Mouse monoclonal antibody raised against a partial recombinant CAPS.

Catalog # AT1392a

### Product Information

---

<b>Application</b>	WB, E
<b>Primary Accession</b>	<a href="#">Q13938</a>
<b>Other Accession</b>	<a href="#">NM_004058</a>
<b>Reactivity</b>	Human
<b>Host</b>	mouse
<b>Clonality</b>	monoclonal
<b>Isotype</b>	IgG1 Kappa
<b>Clone Names</b>	4C6
<b>Calculated MW</b>	30240

### Additional Information

---

<b>Gene ID</b>	828
<b>Other Names</b>	Calcyphosin, Calcyphosine, CAPS
<b>Target/Specificity</b>	CAPS (NP_004049, 1 a.a. ~ 109 a.a) partial recombinant protein with GST tag. MW of the GST tag alone is 26 KDa.
<b>Dilution</b>	WB~~1:500~1000 E~~N/A
<b>Format</b>	Clear, colorless solution in phosphate buffered saline, pH 7.2 .
<b>Storage</b>	Store at -20°C or lower. Aliquot to avoid repeated freezing and thawing.
<b>Precautions</b>	CAPS Antibody (monoclonal) (M01) is for research use only and not for use in diagnostic or therapeutic procedures.

### Background

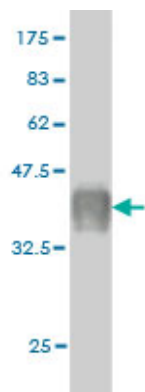
---

This gene encodes a calcium-binding protein, which may play a role in the regulation of ion transport. A similar protein was first described as a potentially important regulatory protein in the dog thyroid and was termed as R2D5 antigen in rabbit. Alternative splicing of this gene generates two transcript variants.

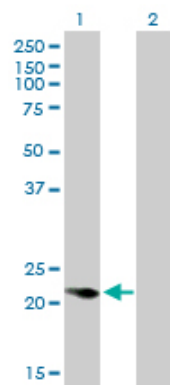
### References

---

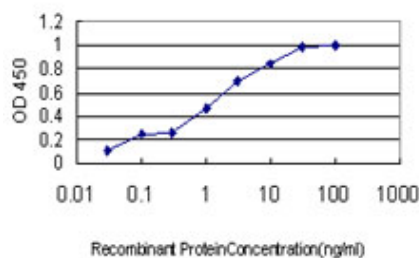
1. Identification of Novel Biomarkers in Pediatric Primitive Neuroectodermal Tumors and Ependymomas by Proteome-Wide Analysis. de Bont JM, den Boer ML, Kros JM, Passier MM, Reddingius RE, Smitt PA, Luider TM, Pieters RJ Neuropathol Exp Neurol. 2007 Jun;66(6):505-16.



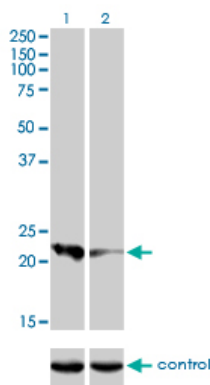
Antibody Reactive Against Recombinant Protein.Western Blot detection against Immunogen (37.73 KDa) .



Western Blot analysis of CAPS expression in transfected 293T cell line by CAPS monoclonal antibody (M01), clone 4C6.  
Lane 1: CAPS transfected lysate(21 KDa).  
Lane 2: Non-transfected lysate.



Detection limit for recombinant GST tagged CAPS is approximately 0.03ng/ml as a capture antibody.



Western blot analysis of CAPS over-expressed 293 cell line, cotransfected with CAPS Validated Chimera RNAi (Cat # AT1392a )

Please note: All products are 'FOR RESEARCH USE ONLY. NOT FOR USE IN DIAGNOSTIC OR THERAPEUTIC PROCEDURES'.