

## CARF Antibody (monoclonal) (M02)

Mouse monoclonal antibody raised against a full length recombinant CARF.

Catalog # AT1397a

### Product Information

---

<b>Application</b>	WB, IHC, IF, E
<b>Primary Accession</b>	<a href="#">Q9NXV6</a>
<b>Other Accession</b>	<a href="#">BC022270</a>
<b>Reactivity</b>	Human
<b>Host</b>	mouse
<b>Clonality</b>	monoclonal
<b>Isotype</b>	IgG1 Kappa
<b>Clone Names</b>	1A6
<b>Calculated MW</b>	61125

### Additional Information

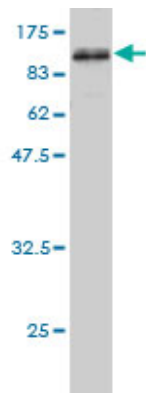
---

<b>Gene ID</b>	55602
<b>Other Names</b>	CDKN2A-interacting protein, Collaborator of ARF, CDKN2AIP, CARF
<b>Target/Specificity</b>	CARF (AAH22270, 1 a.a. ~ 579 a.a) full-length recombinant protein with GST tag. MW of the GST tag alone is 26 KDa.
<b>Dilution</b>	WB~~1:500~1000 IHC~~1:100~500 IF~~1:50~200 E~~N/A
<b>Format</b>	Clear, colorless solution in phosphate buffered saline, pH 7.2 .
<b>Storage</b>	Store at -20°C or lower. Aliquot to avoid repeated freezing and thawing.
<b>Precautions</b>	CARF Antibody (monoclonal) (M02) is for research use only and not for use in diagnostic or therapeutic procedures.

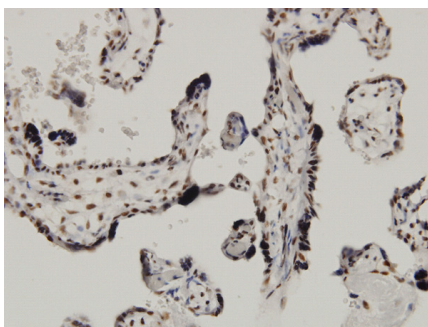
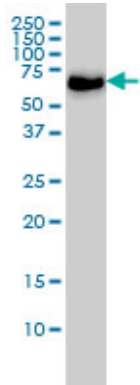
### Images

---

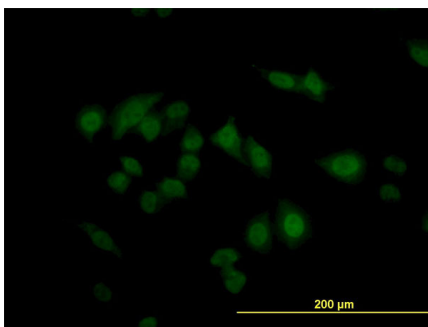
Antibody Reactive Against Recombinant Protein.Western  
Blot detection against Immunogen (89.43 KDa) .



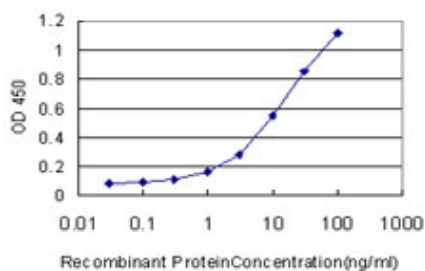
CARF monoclonal antibody (M02), clone 1A6 Western Blot analysis of CARF expression in HeLa S3 NE (Cat # AT1397a)



Immunoperoxidase of monoclonal antibody to CARF on formalin-fixed paraffin-embedded human placenta. [antibody concentration 3 ug/ml]



Immunofluorescence of monoclonal antibody to CARF on HeLa cell. [antibody concentration 10 ug/ml]



Detection limit for recombinant GST tagged CARF is approximately 1ng/ml as a capture antibody.