

## CBX2 Antibody (monoclonal) (M04)

Mouse monoclonal antibody raised against a partial recombinant CBX2.

Catalog # AT1409a

### Product Information

---

<b>Application</b>	WB, E
<b>Primary Accession</b>	<a href="#">Q14781</a>
<b>Other Accession</b>	<a href="#">NM_032647</a>
<b>Reactivity</b>	Human
<b>Host</b>	mouse
<b>Clonality</b>	monoclonal
<b>Isotype</b>	IgG2a Kappa
<b>Clone Names</b>	3E3
<b>Calculated MW</b>	56081

### Additional Information

---

<b>Gene ID</b>	84733
<b>Other Names</b>	Chromobox protein homolog 2, CBX2
<b>Target/Specificity</b>	CBX2 (NP_116036, 66 a.a. ~ 165 a.a) partial recombinant protein with GST tag. MW of the GST tag alone is 26 KDa.
<b>Dilution</b>	WB~~1:500~1000 E~~N/A
<b>Format</b>	Clear, colorless solution in phosphate buffered saline, pH 7.2 .
<b>Storage</b>	Store at -20°C or lower. Aliquot to avoid repeated freezing and thawing.
<b>Precautions</b>	CBX2 Antibody (monoclonal) (M04) is for research use only and not for use in diagnostic or therapeutic procedures.

### Background

---

This gene encodes a component of the polycomb multiprotein complex, which is required to maintain the transcriptionally repressive state of many genes throughout development via chromatin remodeling and modification of histones. Disruption of this gene in mice results in male-to-female gonadal sex reversal. Mutations in this gene are also associated with gonadal dysgenesis in humans. Alternatively spliced transcript variants encoding different isoforms have been noted for this gene.

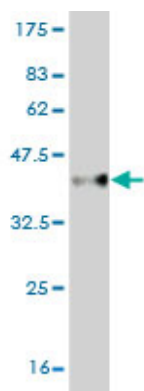
### References

---

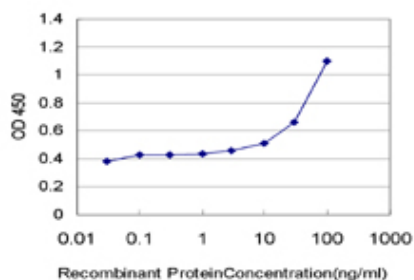
Ovaries and female phenotype in a girl with 46,XY karyotype and mutations in the CBX2 gene. Biason-Lauber A, et al. Am J Hum Genet, 2009 May. PMID 19361780. Human polycomb 2 protein is a SUMO E3 ligase and

alleviates substrate-induced inhibition of cystathionine beta-synthase sumoylation. Agrawal N, et al. PLoS One, 2008. PMID 19107218. An empirical framework for binary interactome mapping. Venkatesan K, et al. Nat Methods, 2009 Jan. PMID 19060904. Towards a proteome-scale map of the human protein-protein interaction network. Rual JF, et al. Nature, 2005 Oct 20. PMID 16189514. Transcriptome characterization elucidates signaling networks that control human ES cell growth and differentiation. Brandenberger R, et al. Nat Biotechnol, 2004 Jun. PMID 15146197.

## Images



Antibody Reactive Against Recombinant Protein. Western Blot detection against Immunogen (36.74 KDa) .



Detection limit for recombinant GST tagged CBX2 is approximately 3ng/ml as a capture antibody.

Please note: All products are 'FOR RESEARCH USE ONLY. NOT FOR USE IN DIAGNOSTIC OR THERAPEUTIC PROCEDURES'.