

## CBX3 Antibody (monoclonal) (M01)

Mouse monoclonal antibody raised against a full length recombinant CBX3.

Catalog # AT1410a

### Product Information

---

<b>Application</b>	WB, IF, E
<b>Primary Accession</b>	<a href="#">Q13185</a>
<b>Other Accession</b>	<a href="#">BC000954</a>
<b>Reactivity</b>	Human
<b>Host</b>	mouse
<b>Clonality</b>	monoclonal
<b>Isotype</b>	IgG2a kappa
<b>Clone Names</b>	1G12-1D9
<b>Calculated MW</b>	20811

### Additional Information

---

<b>Gene ID</b>	11335
<b>Other Names</b>	Chromobox protein homolog 3, HECH, Heterochromatin protein 1 homolog gamma, HP1 gamma, Modifier 2 protein, CBX3
<b>Target/Specificity</b>	CBX3 (AAH00954, 1 a.a. ~ 183 a.a) full-length recombinant protein with GST tag. MW of the GST tag alone is 26 KDa.
<b>Dilution</b>	WB~~1:500~1000 IF~~1:50~200 E~~N/A
<b>Format</b>	Clear, colorless solution in phosphate buffered saline, pH 7.2 .
<b>Storage</b>	Store at -20°C or lower. Aliquot to avoid repeated freezing and thawing.
<b>Precautions</b>	CBX3 Antibody (monoclonal) (M01) is for research use only and not for use in diagnostic or therapeutic procedures.

### References

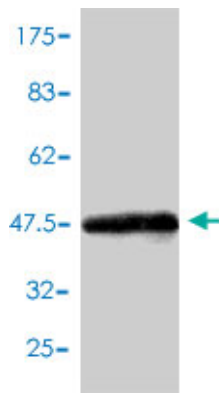
---

1.Loss of the candidate tumor suppressor BTG3 triggers acute cellular senescence via the ERK-JMJD3-p16(INK4a) signaling axis.Lin TY, Cheng YC, Yang HC, Lin WC, Wang CC, Lai PL, Shieh SY.Oncogene. 2011 Oct 24. doi: 10.1038/onc.2011.491.

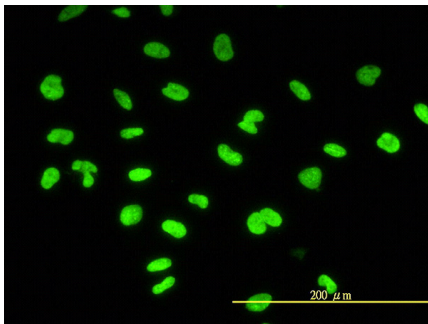
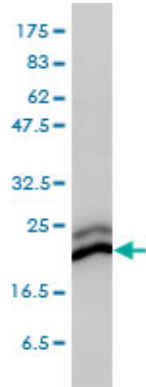
### Images

---

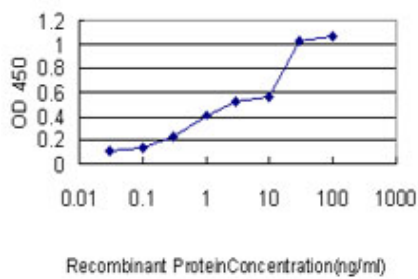
Antibody Reactive Against Recombinant Protein.Western  
Blot detection against Immunogen (45.87 KDa) .



CBX3 monoclonal antibody (M01), clone 1G12-1D9  
Western Blot analysis of CBX3 expression in HeLa (Cat # AT1410a)



Immunofluorescence of monoclonal antibody to CBX3 on HeLa cell. [antibody concentration 10 ug/ml]



Detection limit for recombinant GST tagged CBX3 is approximately 0.03ng/ml as a capture antibody.

Please note: All products are 'FOR RESEARCH USE ONLY. NOT FOR USE IN DIAGNOSTIC OR THERAPEUTIC PROCEDURES'.