

## CCDC6 Antibody (monoclonal) (M03)

Mouse monoclonal antibody raised against a partial recombinant CCDC6.

Catalog # AT1412a

### Product Information

---

<b>Application</b>	WB, E
<b>Primary Accession</b>	<a href="#">Q16204</a>
<b>Other Accession</b>	<a href="#">NM_005436</a>
<b>Reactivity</b>	Human
<b>Host</b>	mouse
<b>Clonality</b>	monoclonal
<b>Isotype</b>	IgG1 Kappa
<b>Clone Names</b>	5D11
<b>Calculated MW</b>	53291

### Additional Information

---

<b>Gene ID</b>	8030
<b>Other Names</b>	Coiled-coil domain-containing protein 6, Papillary thyroid carcinoma-encoded protein, Protein H4, CCDC6, D10S170, TST1
<b>Target/Specificity</b>	CCDC6 (NP_005427, 375 a.a. ~ 474 a.a) partial recombinant protein with GST tag. MW of the GST tag alone is 26 KDa.
<b>Dilution</b>	WB~~1:500~1000 E~~N/A
<b>Format</b>	Clear, colorless solution in phosphate buffered saline, pH 7.2 .
<b>Storage</b>	Store at -20°C or lower. Aliquot to avoid repeated freezing and thawing.
<b>Precautions</b>	CCDC6 Antibody (monoclonal) (M03) is for research use only and not for use in diagnostic or therapeutic procedures.

### Background

---

This gene encodes a coiled-coil domain-containing protein. The encoded protein is ubiquitously expressed and may function as a tumor suppressor. A chromosomal rearrangement resulting in the expression of a fusion gene containing a portion of this gene and the intracellular kinase-encoding domain of the ret proto-oncogene is the cause of thyroid papillary carcinoma.

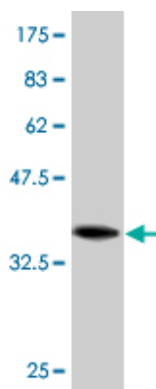
### References

---

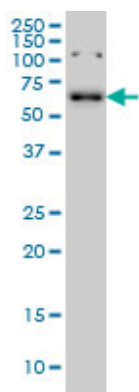
CCDC6 represses CREB1 activity by recruiting histone deacetylase 1 and protein phosphatase 1. Leone V, et al. Oncogene, 2010 Jul 29. PMID 20498639. Personalized smoking cessation: interactions between nicotine

dose, dependence and quit-success genotype score. Rose JE, et al. Mol Med, 2010 Jul-Aug. PMID 20379614. The variant rs1867277 in FOXE1 gene confers thyroid cancer susceptibility through the recruitment of USF1/USF2 transcription factors. Landa I, et al. PLoS Genet, 2009 Sep. PMID 19730683. Defining the human deubiquitinating enzyme interaction landscape. Sowa ME, et al. Cell, 2009 Jul 23. PMID 19615732. Transcript level modulates the inherent oncogenicity of RET/PTC oncoproteins. Richardson DS, et al. Cancer Res, 2009 Jun 1. PMID 19487296.

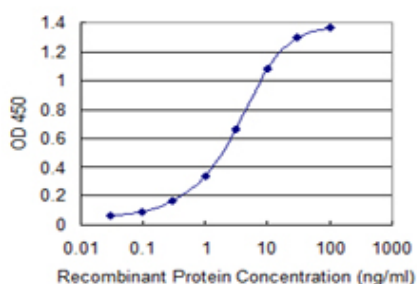
## Images



Antibody Reactive Against Recombinant Protein. Western Blot detection against Immunogen (36.74 KDa) .



CCDC6 monoclonal antibody (M03), clone 5D11 Western Blot analysis of CCDC6 expression in K-562 (Cat # AT1412a )



Detection limit for recombinant GST tagged CCDC6 is 0.03 ng/ml as a capture antibody.

Please note: All products are 'FOR RESEARCH USE ONLY. NOT FOR USE IN DIAGNOSTIC OR THERAPEUTIC PROCEDURES'.