

## CCL3 Antibody (monoclonal) (M01)

Mouse monoclonal antibody raised against a partial recombinant CCL3.

Catalog # AT1417a

### Product Information

---

<b>Application</b>	WB, E
<b>Primary Accession</b>	<a href="#">P10147</a>
<b>Other Accession</b>	<a href="#">NM_002983</a>
<b>Reactivity</b>	Human
<b>Host</b>	mouse
<b>Clonality</b>	monoclonal
<b>Isotype</b>	IgG2a Kappa
<b>Clone Names</b>	4E8
<b>Calculated MW</b>	10085

### Additional Information

---

<b>Gene ID</b>	6348
<b>Other Names</b>	C-C motif chemokine 3, G0/G1 switch regulatory protein 19-1, Macrophage inflammatory protein 1-alpha, MIP-1-alpha, PAT 4641, SIS-beta, Small-inducible cytokine A3, Tonsillar lymphocyte LD78 alpha protein, MIP-1-alpha(4-69), LD78-alpha(4-69), CCL3, G0S19-1, MIP1A, SCYA3
<b>Target/Specificity</b>	CCL3 (NP_002974, 24 a.a. ~ 92 a.a) partial recombinant protein with GST tag. MW of the GST tag alone is 26 KDa.
<b>Dilution</b>	WB~~1:500~1000 E~~N/A
<b>Format</b>	Clear, colorless solution in phosphate buffered saline, pH 7.2 .
<b>Storage</b>	Store at -20°C or lower. Aliquot to avoid repeated freezing and thawing.
<b>Precautions</b>	CCL3 Antibody (monoclonal) (M01) is for research use only and not for use in diagnostic or therapeutic procedures.

### Background

---

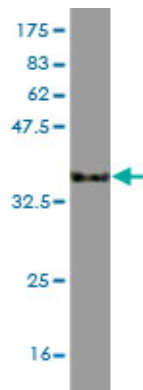
This locus represents a small inducible cytokine. The encoded protein, also known as macrophage inflammatory protein 1 alpha, plays a role in inflammatory responses through binding to the receptors CCR1, CCR4 and CCR5. Polymorphisms at this locus may be associated with both resistance and susceptibility to infection by human immunodeficiency virus type 1.

### References

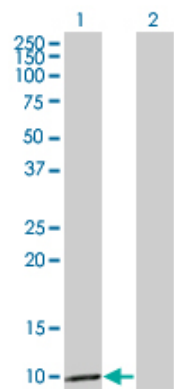
---

1.A multiplex assay to measure RNA transcripts of prostate cancer in urine.Quek SI, Ho ME, Loprieno MA, Ellis WJ, Elliott N, Liu AY.PLoS One. 2012;7(9):e45656. doi: 10.1371/journal.pone.0045656. Epub 2012 Sep 20.

Images

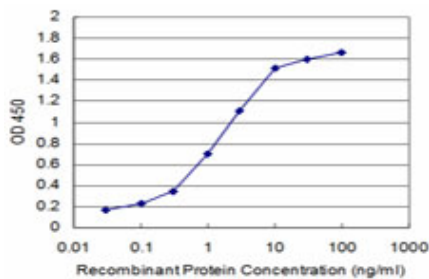


Antibody Reactive Against Recombinant Protein.Western Blot detection against Immunogen (33.33 KDa) .



Western Blot analysis of CCL3 expression in transfected 293T cell line by CCL3 monoclonal antibody (M01), clone 4E7.

Lane 1: CCL3 transfected lysate(10.1 KDa).  
Lane 2: Non-transfected lysate.



Detection limit for recombinant GST tagged CCL3 is approximately 0.1ng/ml as a capture antibody.

Please note: All products are 'FOR RESEARCH USE ONLY. NOT FOR USE IN DIAGNOSTIC OR THERAPEUTIC PROCEDURES'.