

## CCL7 Antibody (monoclonal) (M03)

Mouse monoclonal antibody raised against a partial recombinant CCL7.

Catalog # AT1418a

### Product Information

---

Application	WB, E
Primary Accession	<a href="#">P80098</a>
Other Accession	<a href="#">NM_006273</a>
Reactivity	Human
Host	mouse
Clonality	monoclonal
Isotype	IgG2b Kappa
Clone Names	4B5
Calculated MW	11200

### Additional Information

---

Gene ID	6354
Other Names	C-C motif chemokine 7, Monocyte chemoattractant protein 3, Monocyte chemotactic protein 3, MCP-3, NC28, Small-inducible cytokine A7, CCL7, MCP3, SCYA6, SCYA7
Target/Specificity	CCL7 (NP_006264, 24 a.a. ~ 99 a.a) partial recombinant protein with GST tag. MW of the GST tag alone is 26 KDa.
Dilution	WB~~1:500~1000 E~~N/A
Format	Clear, colorless solution in phosphate buffered saline, pH 7.2 .
Storage	Store at -20°C or lower. Aliquot to avoid repeated freezing and thawing.
Precautions	CCL7 Antibody (monoclonal) (M03) is for research use only and not for use in diagnostic or therapeutic procedures.

### Background

---

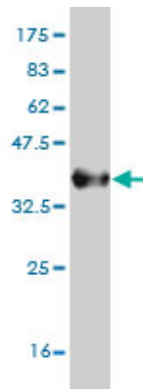
This gene encodes monocyte chemotactic protein 3, a secreted chemokine which attracts macrophages during inflammation and metastasis. It is a member of the C-C subfamily of chemokines which are characterized by having two adjacent cysteine residues. The protein is an in vivo substrate of matrix metalloproteinase 2, an enzyme which degrades components of the extracellular matrix. This gene is part of a cluster of C-C chemokine family members on chromosome 17q.

### References

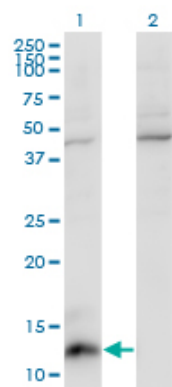
---

Evaluation of candidate stromal epithelial cross-talk genes identifies association between risk of serous ovarian cancer and TERT, a cancer susceptibility hot-spot. Johnatty SE, et al. PLoS Genet, 2010 Jul 8. PMID 20628624.Fucosyltransferase 2 (FUT2) non-secretor status is associated with Crohn's disease. McGovern DP, et al. Hum Mol Genet, 2010 Sep 1. PMID 20570966.Interleukin-9 polymorphism in infants with respiratory syncytial virus infection: an opposite effect in boys and girls. Schuurhof A, et al. Pediatr Pulmonol, 2010 Jun. PMID 20503287.Polymorphisms in innate immunity genes and risk of childhood leukemia. Han S, et al. Hum Immunol, 2010 Jul. PMID 20438785.Risk of meningioma and common variation in genes related to innate immunity. Rajaraman P, et al. Cancer Epidemiol Biomarkers Prev, 2010 May. PMID 20406964.

## Images

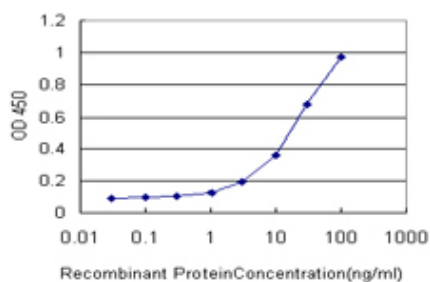


Antibody Reactive Against Recombinant Protein.Western Blot detection against Immunogen (34.1 KDa) .



Western Blot analysis of CCL7 expression in transfected 293T cell line by CCL7 monoclonal antibody (M03), clone 4B5.

Lane 1: CCL7 transfected lysate(11.2 KDa).  
Lane 2: Non-transfected lysate.



Detection limit for recombinant GST tagged CCL7 is approximately 1ng/ml as a capture antibody.

Please note: All products are 'FOR RESEARCH USE ONLY. NOT FOR USE IN DIAGNOSTIC OR THERAPEUTIC PROCEDURES'.