

CCNH Antibody (monoclonal) (M01)

Mouse monoclonal antibody raised against a partial recombinant CCNH.

Catalog # AT1422a

Product Information

Application	WB, IHC, IF, E
Primary Accession	P51946
Other Accession	BC005280
Reactivity	Human
Host	mouse
Clonality	monoclonal
Isotype	IgG2a kappa
Clone Names	1B8
Calculated MW	37643

Additional Information

Gene ID	902
Other Names	Cyclin-H, MO15-associated protein, p34, p37, CCNH
Target/Specificity	CCNH (AAH05280, 1 a.a. ~ 110 a.a) partial recombinant protein with GST tag. MW of the GST tag alone is 26 KDa.
Dilution	WB~~1:500~1000 IHC~~1:100~500 IF~~1:50~200 E~~N/A
Format	Clear, colorless solution in phosphate buffered saline, pH 7.2 .
Storage	Store at -20°C or lower. Aliquot to avoid repeated freezing and thawing.
Precautions	CCNH Antibody (monoclonal) (M01) is for research use only and not for use in diagnostic or therapeutic procedures.

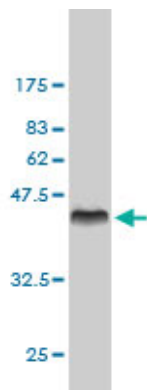
Background

The protein encoded by this gene belongs to the highly conserved cyclin family, whose members are characterized by a dramatic periodicity in protein abundance through the cell cycle. Cyclins function as regulators of CDK kinases. Different cyclins exhibit distinct expression and degradation patterns which contribute to the temporal coordination of each mitotic event. This cyclin forms a complex with CDK7 kinase and ring finger protein MAT1. The kinase complex is able to phosphorylate CDK2 and CDC2 kinases, thus functions as a CDK-activating kinase (CAK). This cyclin and its kinase partner are components of TFIIH, as well as RNA polymerase II protein complexes. They participate in two different transcriptional regulation processes, suggesting an important link between basal transcription control and the cell cycle machinery.

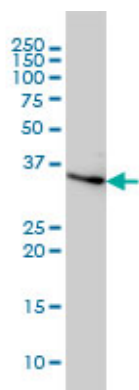
References

1. Mutations in UVSSA cause UV-sensitive syndrome and impair RNA polymerase II processing in transcription-coupled nucleotide-excision repair. Nakazawa Y, Sasaki K, Mitsutake N, Matsuse M, Shimada M, Nardo T, Takahashi Y, Ohyama K, Ito K, Mishima H, Nomura M, Kinoshita A, Ono S, Takenaka K, Masuyama R, Kudo T, Slor H, Utani A, Tateishi S, Yamashita S, Stefanini M, Lehmann AR, Yoshiura KI, Ogi T. Nat Genet. 2012 Apr 1. doi: 10.1038/ng.2229. [Epub ahead of print]

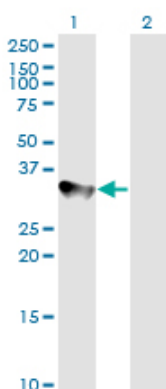
Images



Antibody Reactive Against Recombinant Protein. Western Blot detection against Immunogen (37.73 KDa) .

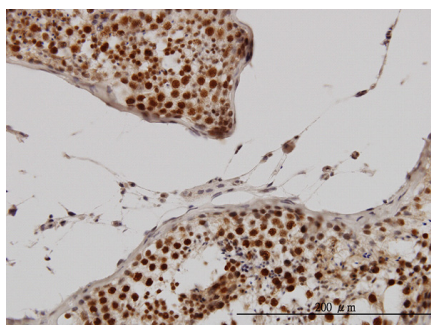


CCNH monoclonal antibody (M01), clone 1B8 Western Blot analysis of CCNH expression in HeLa (Cat # AT1422a)



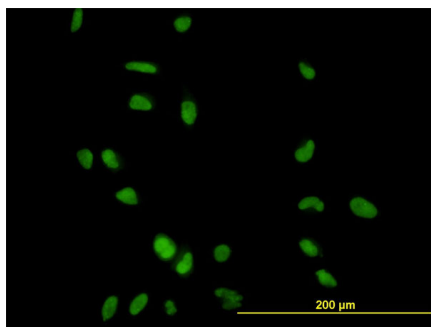
Western Blot analysis of CCNH expression in transfected 293T cell line by CCNH monoclonal antibody (M01), clone 1B8.

Lane 1: CCNH transfected lysate (37.6 KDa).
Lane 2: Non-transfected lysate.

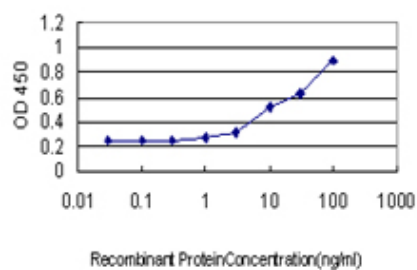


Immunoperoxidase of monoclonal antibody to CCNH on formalin-fixed paraffin-embedded human testis. [antibody concentration 3 ug/ml]

Immunofluorescence of monoclonal antibody to CCNH



on HeLa cell. [antibody concentration 10 ug/ml]



Detection limit for recombinant GST tagged CCNH is approximately 1ng/ml as a capture antibody.

Please note: All products are 'FOR RESEARCH USE ONLY. NOT FOR USE IN DIAGNOSTIC OR THERAPEUTIC PROCEDURES'.