

## CCR2 Antibody (monoclonal) (M01A)

Mouse monoclonal antibody raised against a partial recombinant CCR2.

Catalog # AT1425a

### Product Information

---

Application	WB
Primary Accession	<a href="#">P41597</a>
Other Accession	<a href="#">NM_000648</a>
Reactivity	Human
Host	Mouse
Clonality	monoclonal
Isotype	IgM Kappa
Clone Names	4D12
Calculated MW	41915

### Additional Information

---

Gene ID	729230
Other Names	C-C chemokine receptor type 2, C-C CKR-2, CC-CKR-2, CCR-2, CCR2, Monocyte chemoattractant protein 1 receptor, MCP-1-R, CD192, CCR2, CMKBR2
Target/Specificity	CCR2 (NP_000639, 1 a.a. ~ 42 a.a) partial recombinant protein with GST tag. MW of the GST tag alone is 26 KDa.
Dilution	WB~~1:500~1000
Format	Clear, colorless solution in phosphate buffered saline, pH 7.2 .
Storage	Store at -20°C or lower. Aliquot to avoid repeated freezing and thawing.
Precautions	CCR2 Antibody (monoclonal) (M01A) is for research use only and not for use in diagnostic or therapeutic procedures.

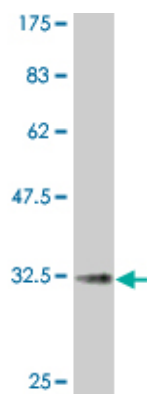
### Background

---

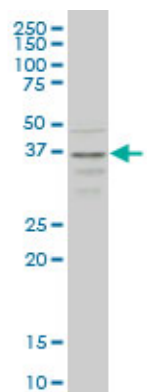
This gene encodes two isoforms of a receptor for monocyte chemoattractant protein-1, a chemokine which specifically mediates monocyte chemotaxis. Monocyte chemoattractant protein-1 is involved in monocyte infiltration in inflammatory diseases such as rheumatoid arthritis as well as in the inflammatory response against tumors. The receptors encoded by this gene mediate agonist-dependent calcium mobilization and inhibition of adenylyl cyclase. This gene is located in the chemokine receptor gene cluster region. Two alternatively spliced transcript variants are expressed by the gene. [provided by RefSeq]

### Images

---



Antibody Reactive Against Recombinant Protein. Western Blot detection against Immunogen (30.36 KDa) .



CCR2 monoclonal antibody (M01A), clone 4D12 Western Blot analysis of CCR2 expression in HepG2 ( (Cat # AT1425a )

Please note: All products are 'FOR RESEARCH USE ONLY. NOT FOR USE IN DIAGNOSTIC OR THERAPEUTIC PROCEDURES'.