

CCT2 Antibody (monoclonal) (M01)

Mouse monoclonal antibody raised against a partial recombinant CCT2.

Catalog # AT1427a

Product Information

Application	WB, IF, E
Primary Accession	P78371
Other Accession	NM_006431
Reactivity	Human
Host	mouse
Clonality	monoclonal
Isotype	IgG1 Kappa
Clone Names	2G6
Calculated MW	57488

Additional Information

Gene ID	10576
Other Names	T-complex protein 1 subunit beta, TCP-1-beta, CCT-beta, CCT2, 99D81, CCTB
Target/Specificity	CCT2 (NP_006422, 117 a.a. ~ 217 a.a) partial recombinant protein with GST tag. MW of the GST tag alone is 26 KDa.
Dilution	WB~~1:500~1000 IF~~1:50~200 E~~N/A
Format	Clear, colorless solution in phosphate buffered saline, pH 7.2 .
Storage	Store at -20°C or lower. Aliquot to avoid repeated freezing and thawing.
Precautions	CCT2 Antibody (monoclonal) (M01) is for research use only and not for use in diagnostic or therapeutic procedures.

Background

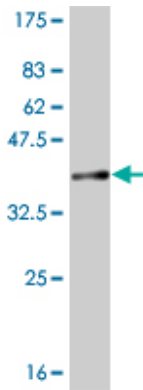
The protein encoded by this gene is a molecular chaperone that is a member of the chaperonin containing TCP1 complex (CCT), also known as the TCP1 ring complex (TRiC). This complex consists of two identical stacked rings, each containing eight different proteins. Unfolded polypeptides enter the central cavity of the complex and are folded in an ATP-dependent manner. The complex folds various proteins, including actin and tubulin. Alternate transcriptional splice variants of the gene described in this record have been observed but have not been thoroughly characterized.

References

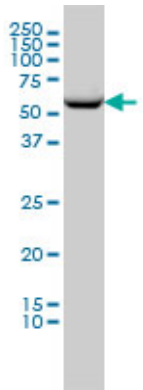
- 1.Reconstitution of the human chaperonin CCT by co-expression of the eight distinct subunits in mammalian

cells.Machida K, Masutani M, Kobayashi T, Mikami S, Nishino Y, Miyazawa A, Imataka H.Protein Expr Purif. 2011 Nov 22;22:2.BBS6, BBS10, and BBS12 form a complex with CCT/TRiC family chaperonins and mediate BBSome assembly.Seo S, Baye LM, Schulz NP, Beck JS, Zhang Q, Slusarski DC, Sheffield VC.Proc Natl Acad Sci U S A. 2010 Jan 4. [Epub ahead of print]

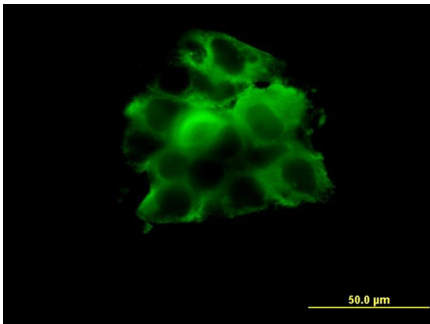
Images



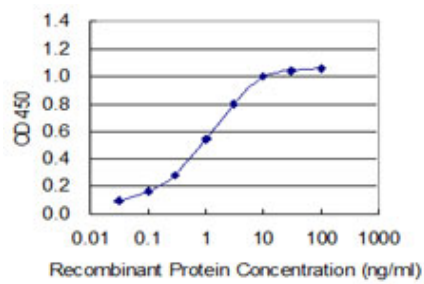
Antibody Reactive Against Recombinant Protein.Western Blot detection against Immunogen (36.85 KDa) .



CCT2 monoclonal antibody (M01), clone 2G6 Western Blot analysis of CCT2 expression in A-431 ((Cat # AT1427a)

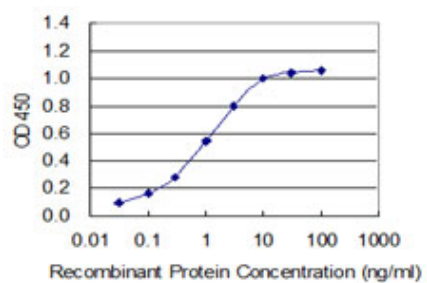


Immunofluorescence of monoclonal antibody to CCT2 on A-431 cell. [antibody concentration 10 ug/ml]



Detection limit for recombinant GST tagged CCT2 is approximately 0.3ng/ml as a capture antibody.

Detection limit for recombinant GST tagged CCT2 is 0.03 ng/ml as a capture antibody.



Please note: All products are 'FOR RESEARCH USE ONLY. NOT FOR USE IN DIAGNOSTIC OR THERAPEUTIC PROCEDURES'.