

## CD38 Antibody (monoclonal) (M02)

Mouse monoclonal antibody raised against a partial recombinant CD38.

Catalog # AT1436a

### Product Information

---

<b>Application</b>	WB, IF, E
<b>Primary Accession</b>	<a href="#">P28907</a>
<b>Other Accession</b>	<a href="#">BC007964</a>
<b>Reactivity</b>	Human
<b>Host</b>	mouse
<b>Clonality</b>	monoclonal
<b>Isotype</b>	IgG1 Kappa
<b>Clone Names</b>	4G3
<b>Calculated MW</b>	34328

### Additional Information

---

<b>Gene ID</b>	952
<b>Other Names</b>	ADP-ribosyl cyclase/cyclic ADP-ribose hydrolase 1, 2'-phospho-ADP-ribosyl cyclase, 2'-phospho-ADP-ribosyl cyclase/2'-phospho-cyclic-ADP-ribose transferase, 2'-phospho-cyclic-ADP-ribose transferase, ADP-ribosyl cyclase 1, ADPRC 1, Cyclic ADP-ribose hydrolase 1, cADPr hydrolase 1, T10, CD38, CD38
<b>Target/Specificity</b>	CD38 (AAH07964, 201 a.a. ~ 300 a.a) partial recombinant protein with GST tag. MW of the GST tag alone is 26 KDa.
<b>Dilution</b>	WB~~1:500~1000 IF~~1:50~200 E~~N/A
<b>Format</b>	Clear, colorless solution in phosphate buffered saline, pH 7.2 .
<b>Storage</b>	Store at -20°C or lower. Aliquot to avoid repeated freezing and thawing.
<b>Precautions</b>	CD38 Antibody (monoclonal) (M02) is for research use only and not for use in diagnostic or therapeutic procedures.

### Background

---

CD38 is a novel multifunctional ectoenzyme widely expressed in cells and tissues especially in leukocytes. CD38 also functions in cell adhesion, signal transduction and calcium signaling.

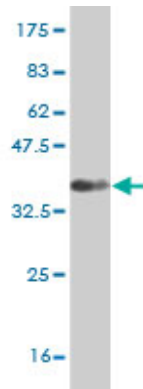
### References

---

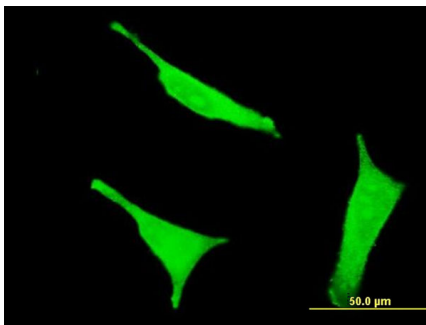
Mouse embryonic fibroblasts from CD38 knockout mice are resistant to oxidative stresses through inhibition of reactive oxygen species production and Ca(2+) overload. Ge Y, et al. Biochem Biophys Res Commun, 2010

Aug 20. PMID 20638362. Two genetic variants of CD38 in subjects with autism spectrum disorder and controls. Munesue T, et al. *Neurosci Res*, 2010 Jun. PMID 20435366. New genetic associations detected in a host response study to hepatitis B vaccine. Davila S, et al. *Genes Immun*, 2010 Apr. PMID 20237496. CD38/CD31 interactions activate genetic pathways leading to proliferation and migration in chronic lymphocytic leukemia cells. Deaglio S, et al. *Mol Med*, 2010 Mar. PMID 19956559. Genome-wide association study identifies common variants at four loci as genetic risk factors for Parkinson's disease. Satake W, et al. *Nat Genet*, 2009 Dec. PMID 19915576.

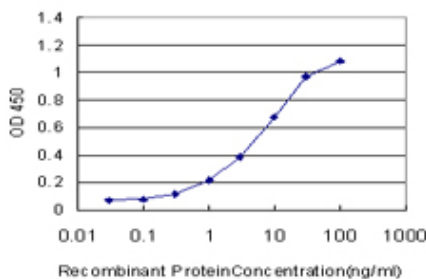
## Images



Antibody Reactive Against Recombinant Protein. Western Blot detection against Immunogen (36.41 KDa) .



Immunofluorescence of monoclonal antibody to CD38 on HeLa cell . [antibody concentration 10 ug/ml]



Detection limit for recombinant GST tagged CD38 is approximately 0.3ng/ml as a capture antibody.

Please note: All products are 'FOR RESEARCH USE ONLY. NOT FOR USE IN DIAGNOSTIC OR THERAPEUTIC PROCEDURES'.