

CD5L Antibody (monoclonal) (M01)

Mouse monoclonal antibody raised against a partial recombinant CD5L.

Catalog # AT1443a

Product Information

Application	WB, IP, E
Primary Accession	O43866
Other Accession	BC033586
Reactivity	Human
Host	Mouse
Clonality	monoclonal
Isotype	IgG2a Kappa
Clone Names	1C8
Calculated MW	38088

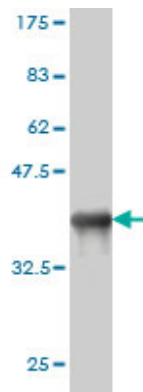
Additional Information

Gene ID	922
Other Names	CD5 antigen-like, CT-2, IgM-associated peptide, SP-alpha, CD5L, API6
Target/Specificity	CD5L (AAH33586, 41 a.a. ~ 140 a.a) partial recombinant protein with GST tag. MW of the GST tag alone is 26 KDa.
Dilution	WB~~1:500~1000 IP~~N/A E~~N/A
Format	Clear, colorless solution in phosphate buffered saline, pH 7.2 .
Storage	Store at -20°C or lower. Aliquot to avoid repeated freezing and thawing.
Precautions	CD5L Antibody (monoclonal) (M01) is for research use only and not for use in diagnostic or therapeutic procedures.

References

Personalized smoking cessation: interactions between nicotine dose, dependence and quit-success genotype score. Rose JE, et al. Mol Med, 2010 Jul-Aug. PMID 20379614. New genetic associations detected in a host response study to hepatitis B vaccine. Davila S, et al. Genes Immun, 2010 Apr. PMID 20237496. Transcriptomic and genetic studies identify IL-33 as a candidate gene for Alzheimer's disease. Chapuis J, et al. Mol Psychiatry, 2009 Nov. PMID 19204726. Myeloid-specific expression of Api6/AIM/Sp alpha induces systemic inflammation and adenocarcinoma in the lung. Qu P, et al. J Immunol, 2009 Feb 1. PMID 19155514. Glycoproteomic analysis of plasma from patients with atopic dermatitis: CD5L and ApoE as potential biomarkers. Kim WK, et al. Exp Mol Med, 2008 Dec 31. PMID 19116453.

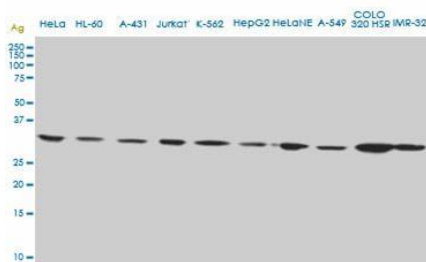
Images



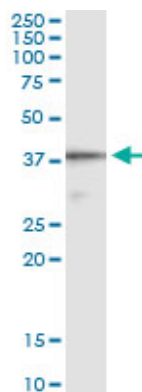
Antibody Reactive Against Recombinant Protein. Western Blot detection against Immunogen (36.63 KDa) .



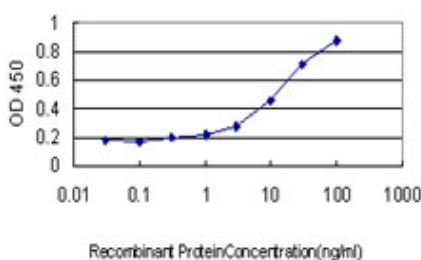
CD5L monoclonal antibody (M01), clone 1C8. Western Blot analysis of CD5L expression in HL-60 ((Cat # AT1443a)



CD5L monoclonal antibody (M01), clone 1C8. Western Blot analysis of CD5L expression in different cell lines.



Immunoprecipitation of CD5L transfected lysate using anti-CD5L monoclonal antibody and Protein A Magnetic Bead ([U0007](#)), and immunoblotted with CD5L MaxPab rabbit polyclonal antibody.



Detection limit for recombinant GST tagged CD5L is approximately 0.3ng/ml as a capture antibody.