

# CDADC1 Antibody (monoclonal) (M01)

Mouse monoclonal antibody raised against a partial recombinant CDADC1.

Catalog # AT1453a

## Product Information

---

<b>Application</b>	WB, IHC, E
<b>Primary Accession</b>	<a href="#">Q9BWV3</a>
<b>Other Accession</b>	<a href="#">NM_030911</a>
<b>Reactivity</b>	Human, Mouse
<b>Host</b>	mouse
<b>Clonality</b>	monoclonal
<b>Isotype</b>	IgG1 Kappa
<b>Clone Names</b>	1A2
<b>Calculated MW</b>	58455

## Additional Information

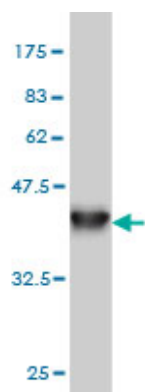
---

<b>Gene ID</b>	81602
<b>Other Names</b>	Cytidine and dCMP deaminase domain-containing protein 1, Testis development protein NYD-SP15, CDADC1
<b>Target/Specificity</b>	CDADC1 (NP_112173, 423 a.a. ~ 514 a.a) partial recombinant protein with GST tag. MW of the GST tag alone is 26 KDa.
<b>Dilution</b>	WB~~1:500~1000 IHC~~1:100~500 E~~N/A
<b>Format</b>	Clear, colorless solution in phosphate buffered saline, pH 7.2 .
<b>Storage</b>	Store at -20°C or lower. Aliquot to avoid repeated freezing and thawing.
<b>Precautions</b>	CDADC1 Antibody (monoclonal) (M01) is for research use only and not for use in diagnostic or therapeutic procedures.

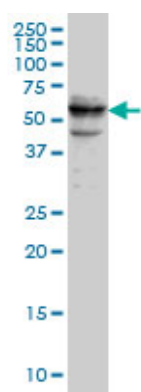
## References

---

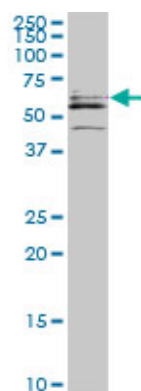
NYD-SP15: a novel gene potentially involved in regulating testicular development and spermatogenesis. Liu Q, et al. Biochem Genet, 2006 Oct. PMID 16955368. Diversification of transcriptional modulation: large-scale identification and characterization of putative alternative promoters of human genes. Kimura K, et al. Genome Res, 2006 Jan. PMID 16344560. Generation and initial analysis of more than 15,000 full-length human and mouse cDNA sequences. Strausberg RL, et al. Proc Natl Acad Sci U S A, 2002 Dec 24. PMID 12477932. Insight into hepatocellular carcinogenesis at transcriptome level by comparing gene expression profiles of hepatocellular carcinoma with those of corresponding noncancerous liver. Xu XR, et al. Proc Natl Acad Sci U S A, 2001 Dec 18. PMID 11752456.



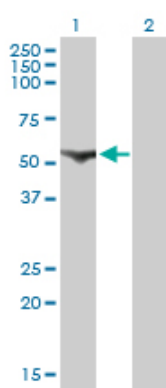
Antibody Reactive Against Recombinant Protein. Western Blot detection against Immunogen (35.86 KDa) .



CDADC1 monoclonal antibody (M01), clone 1A2. Western Blot analysis of CDADC1 expression in Raw 264.7.



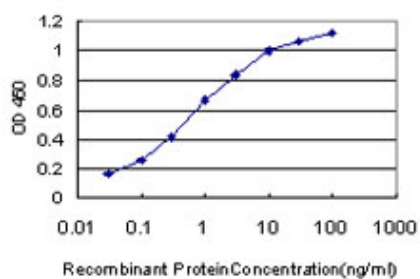
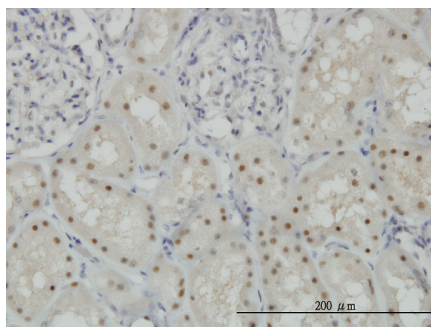
CDADC1 monoclonal antibody (M01), clone 1A2. Western Blot analysis of CDADC1 expression in NIH/3T3 (Cat # AT1453a )



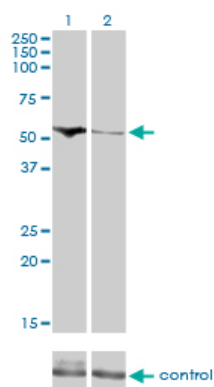
Western Blot analysis of CDADC1 expression in transfected 293T cell line by CDADC1 monoclonal antibody (M01), clone 1A2.

Lane 1: CDADC1 transfected lysate(58.5 KDa).  
Lane 2: Non-transfected lysate.

Immunoperoxidase of monoclonal antibody to CDADC1 on formalin-fixed paraffin-embedded human kidney. [antibody concentration 1 ug/ml]



Detection limit for recombinant GST tagged CDADC1 is approximately 0.03ng/ml as a capture antibody.



Western blot analysis of CDADC1 over-expressed 293 cell line, cotransfected with CDADC1 Validated Chimera RNAi (Cat # AT1453a )

Please note: All products are 'FOR RESEARCH USE ONLY. NOT FOR USE IN DIAGNOSTIC OR THERAPEUTIC PROCEDURES'.