

CDCA3 Antibody (monoclonal) (M11)

Mouse monoclonal antibody raised against a full length recombinant CDCA3.

Catalog # AT1470a

Product Information

Application	WB, E
Primary Accession	Q99618
Other Accession	BC002551
Reactivity	Human
Host	mouse
Clonality	monoclonal
Isotype	IgG2b Kappa
Clone Names	3B9
Calculated MW	28998

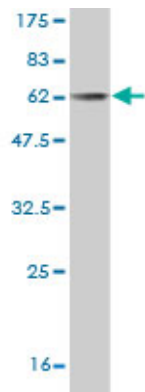
Additional Information

Gene ID	83461
Other Names	Cell division cycle-associated protein 3, Gene-rich cluster protein C8, Trigger of mitotic entry protein 1, TOME-1, CDCA3, C8, GRCC8, TOME1
Target/Specificity	CDCA3 (AAH02551, 1 a.a. ~ 268 a.a) full-length recombinant protein with GST tag. MW of the GST tag alone is 26 KDa.
Dilution	WB~~1:500~1000 E~~N/A
Format	Clear, colorless solution in phosphate buffered saline, pH 7.2 .
Storage	Store at -20°C or lower. Aliquot to avoid repeated freezing and thawing.
Precautions	CDCA3 Antibody (monoclonal) (M11) is for research use only and not for use in diagnostic or therapeutic procedures.

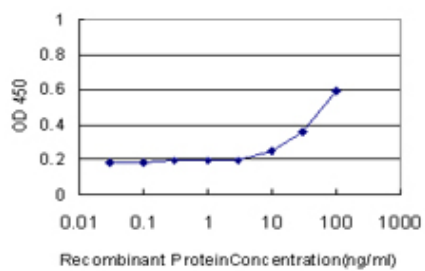
References

Identification of type 2 diabetes-associated combination of SNPs using support vector machine. Ban HJ, et al. BMC Genet, 2010 Apr 23. PMID 20416077. Towards a proteome-scale map of the human protein-protein interaction network. Rual JF, et al. Nature, 2005 Oct 20. PMID 16189514. Cell-cycle-dependent regulation of the human and mouse Tome-1 promoters. Yoshida K. FEBS Lett, 2005 Feb 28. PMID 15733861. Complete sequencing and characterization of 21,243 full-length human cDNAs. Ota T, et al. Nat Genet, 2004 Jan. PMID 14702039. Tome-1, a trigger of mitotic entry, is degraded during G1 via the APC. Ayad NG, et al. Cell, 2003 Apr 4. PMID 12679038.

Images



Antibody Reactive Against Recombinant Protein. Western Blot detection against Immunogen (55.22 KDa) .



Detection limit for recombinant GST tagged CDCA3 is approximately 10ng/ml as a capture antibody.

Please note: All products are 'FOR RESEARCH USE ONLY. NOT FOR USE IN DIAGNOSTIC OR THERAPEUTIC PROCEDURES'.