

CENTB2 Antibody (monoclonal) (M01)

Mouse monoclonal antibody raised against a partial recombinant CENTB2.

Catalog # AT1495a

Product Information

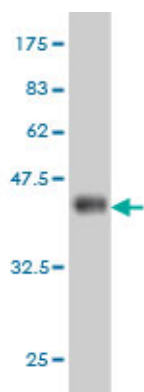
Application	WB, IP, E
Primary Accession	Q15057
Other Accession	NM_012287
Reactivity	Human
Host	mouse
Clonality	monoclonal
Isotype	IgG1 Kappa
Clone Names	4G3
Calculated MW	88029

Additional Information

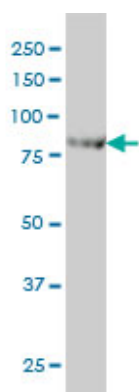
Gene ID	23527
Other Names	Arf-GAP with coiled-coil, ANK repeat and PH domain-containing protein 2, Centaurin-beta-2, Cnt-b2, ACAP2, CENTB2, KIAA0041
Target/Specificity	CENTB2 (NP_036419, 473 a.a. ~ 581 a.a) partial recombinant protein with GST tag. MW of the GST tag alone is 26 KDa.
Dilution	WB~~1:500~1000 IP~~N/A E~~N/A
Format	Clear, colorless solution in phosphate buffered saline, pH 7.2 .
Storage	Store at -20°C or lower. Aliquot to avoid repeated freezing and thawing.
Precautions	CENTB2 Antibody (monoclonal) (M01) is for research use only and not for use in diagnostic or therapeutic procedures.

References

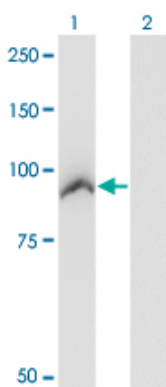
Substrate specificities and activities of AZAP family Arf GAPs in vivo. Cuthbert EJ, et al. Am J Physiol Cell Physiol, 2008 Jan. PMID 18003747. Diversification of transcriptional modulation: large-scale identification and characterization of putative alternative promoters of human genes. Kimura K, et al. Genome Res, 2006 Jan. PMID 16344560. Immunoaffinity profiling of tyrosine phosphorylation in cancer cells. Rush J, et al. Nat Biotechnol, 2005 Jan. PMID 15592455. The status, quality, and expansion of the NIH full-length cDNA project: the Mammalian Gene Collection (MGC). Gerhard DS, et al. Genome Res, 2004 Oct. PMID 15489334. Generation and initial analysis of more than 15,000 full-length human and mouse cDNA sequences. Strausberg RL, et al. Proc Natl Acad Sci U S A, 2002 Dec 24. PMID 12477932.



Antibody Reactive Against Recombinant Protein. Western Blot detection against Immunogen (37.73 KDa) .



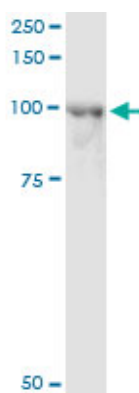
CENTB2 monoclonal antibody (M01), clone 4G3 Western Blot analysis of CENTB2 expression in HeLa (Cat # AT1495a)



Western Blot analysis of ACAP2 expression in transfected 293T cell line by ACAP2 monoclonal antibody (M01), clone 4G3.

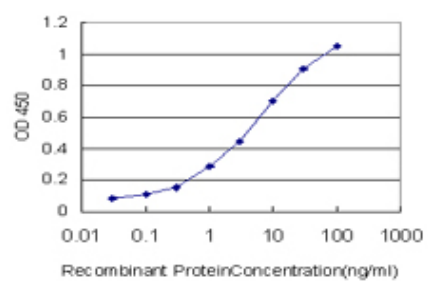
Lane 1: ACAP2 transfected lysate (Predicted MW: 88.1 KDa).

Lane 2: Non-transfected lysate.



Immunoprecipitation of ACAP2 transfected lysate using anti-ACAP2 monoclonal antibody and Protein A Magnetic Bead ([U0007](#)), and immunoblotted with ACAP2 monoclonal antibody.

Detection limit for recombinant GST tagged CENTB2 is approximately 0.1ng/ml as a capture antibody.



Please note: All products are 'FOR RESEARCH USE ONLY. NOT FOR USE IN DIAGNOSTIC OR THERAPEUTIC PROCEDURES'.