

## CETN2 Antibody (monoclonal) (M01)

Mouse monoclonal antibody raised against a partial recombinant CETN2.

Catalog # AT1504a

### Product Information

---

|                          |                           |
|--------------------------|---------------------------|
| <b>Application</b>       | WB, E                     |
| <b>Primary Accession</b> | <a href="#">P41208</a>    |
| <b>Other Accession</b>   | <a href="#">NM_004344</a> |
| <b>Reactivity</b>        | Human                     |
| <b>Host</b>              | mouse                     |
| <b>Clonality</b>         | monoclonal                |
| <b>Isotype</b>           | IgG1 Kappa                |
| <b>Clone Names</b>       | 3F8                       |
| <b>Calculated MW</b>     | 19738                     |

### Additional Information

---

|                           |                                                                                                                     |
|---------------------------|---------------------------------------------------------------------------------------------------------------------|
| <b>Gene ID</b>            | 1069                                                                                                                |
| <b>Other Names</b>        | Centrin-2, Caltractin isoform 1, CETN2, CALT, CEN2                                                                  |
| <b>Target/Specificity</b> | CETN2 (NP_004335, 85 a.a. ~ 172 a.a) partial recombinant protein with GST tag. MW of the GST tag alone is 26 KDa.   |
| <b>Dilution</b>           | WB~~1:500~1000 E~~N/A                                                                                               |
| <b>Format</b>             | Clear, colorless solution in phosphate buffered saline, pH 7.2 .                                                    |
| <b>Storage</b>            | Store at -20°C or lower. Aliquot to avoid repeated freezing and thawing.                                            |
| <b>Precautions</b>        | CETN2 Antibody (monoclonal) (M01) is for research use only and not for use in diagnostic or therapeutic procedures. |

### Background

---

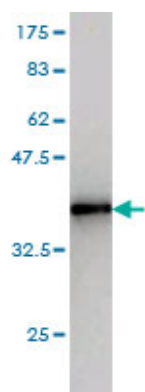
Caltractin belongs to a family of calcium-binding proteins and is a structural component of the centrosome. The high level of conservation from algae to humans and its association with the centrosome suggested that caltractin plays a fundamental role in the structure and function of the microtubule-organizing center, possibly required for the proper duplication and segregation of the centrosome.

### References

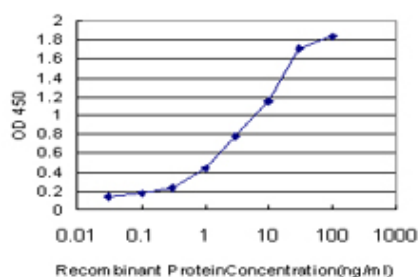
---

1.CDK5RAP2 functions in centrosome to spindle pole attachment and DNA damage response.Barr AR, Kilmartin JV, Gergely F.J Cell Biol. 2010 Apr 5;189(1):23-39.

## Images



Antibody Reactive Against Recombinant Protein. Western Blot detection against Immunogen (35.42 KDa) .



Detection limit for recombinant GST tagged CETN2 is approximately 0.1 ng/ml as a capture antibody.

Please note: All products are 'FOR RESEARCH USE ONLY. NOT FOR USE IN DIAGNOSTIC OR THERAPEUTIC PROCEDURES'.