

CFL1 Antibody (monoclonal) (M04)

Mouse monoclonal antibody raised against a full length recombinant CFL1.
Catalog # AT1506a

Product Information

Application	WB, IHC, IF, E
Primary Accession	P23528
Other Accession	BC011005
Reactivity	Human, Mouse
Host	mouse
Clonality	monoclonal
Isotype	IgG2a Kappa
Clone Names	1A1

Additional Information

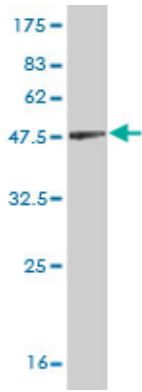
Other Names	Cofilin-1, 18 kDa phosphoprotein, p18, Cofilin, non-muscle isoform, CFL1, CFL
Target/Specificity	CFL1 (AAH11005, 1 a.a. ~ 166 a.a) full-length recombinant protein with GST tag. MW of the GST tag alone is 26 kDa.
Dilution	WB~~1:500~1000 IHC~~1:100~500 IF~~1:50~200 E~~N/A
Format	Clear, colorless solution in phosphate buffered saline, pH 7.2 .
Storage	Store at -20°C or lower. Aliquot to avoid repeated freezing and thawing.
Precautions	CFL1 Antibody (monoclonal) (M04) is for research use only and not for use in diagnostic or therapeutic procedures.

Background

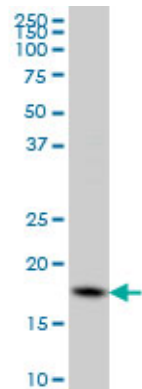
Cofilin is a widely distributed intracellular actin-modulating protein that binds and depolymerizes filamentous F-actin and inhibits the polymerization of monomeric G-actin in a pH-dependent manner. It is involved in the translocation of actin-cofilin complex from cytoplasm to nucleus.

References

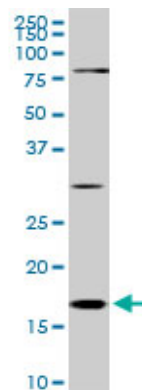
1.Determination of urine cofilin-1 level in acute kidney injury using a high-throughput localized surface plasmon-coupled fluorescence biosensor.Chang YF, Chao CH, Lin LY, Tsai CH, Chou C, Lee YJ Biomed Opt. 2014 Jan;19(1):11004. doi: 10.1117/1.JBO.19.1.011004.2.Identification of phosphorylated serine-15 and -82 residues of HSPB1 in 5-fluorouracil- resistant colorectal cancer cells by proteomics.Sakai A, Otani M, Miyamoto A, Yoshida H, Furuya E, Tanigawa N.Journal of Proteomics (2011), doi: 10.1016/j.jprot.2011.09.0233.Overexpression of cofilin 1 can predict progression-free survival in patients with epithelial ovarian cancer receiving standard therapy.Nishimura S, Tsuda H, Kataoka F, Arao T, Nomura H, Chiyoda T, Susumu N, Nishio K, Aoki D.Hum Pathol. 2011 Jan 13. [Epub ahead of print]



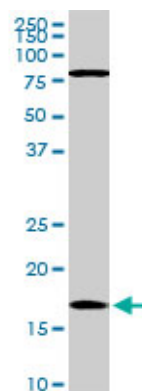
Antibody Reactive Against Recombinant Protein. Western Blot detection against Immunogen (44 KDa) .



CFL1 monoclonal antibody (M04), clone 1A1 Western Blot analysis of CFL1 expression in HeLa ((Cat # AT1506a)

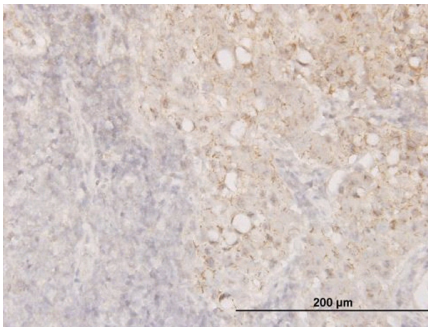


CFL1 monoclonal antibody (M04), clone 1A1. Western Blot analysis of CFL1 expression in Raw 264.7((Cat # AT1506a)

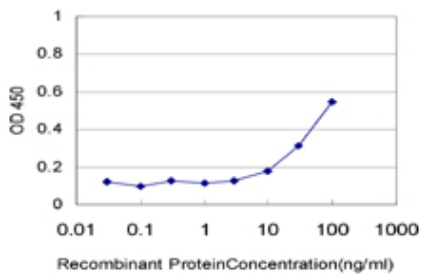
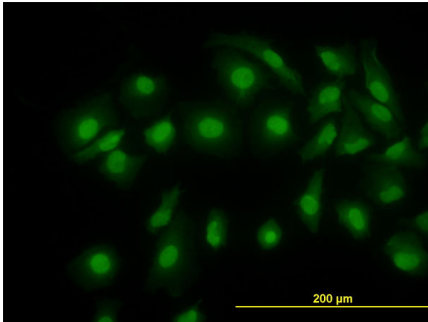


CFL1 monoclonal antibody (M04), clone 1A1. Western Blot analysis of CFL1 expression in NIH/3T3((Cat # AT1506a)

Immunoperoxidase of monoclonal antibody to CFL1 on formalin-fixed paraffin-embedded human breast cancer. [antibody concentration 1.5 ug/ml]



Immunofluorescence of monoclonal antibody to CFL1 on HeLa cell. [antibody concentration 10 ug/ml]



Detection limit for recombinant GST tagged CFL1 is approximately 10ng/ml as a capture antibody.

Please note: All products are 'FOR RESEARCH USE ONLY. NOT FOR USE IN DIAGNOSTIC OR THERAPEUTIC PROCEDURES'.