

## CFL2 Antibody (monoclonal) (M03)

Mouse monoclonal antibody raised against a partial recombinant CFL2.

Catalog # AT1507a

### Product Information

---

<b>Application</b>	WB, IHC, IF, E
<b>Primary Accession</b>	<a href="#">Q9Y281</a>
<b>Other Accession</b>	<a href="#">NM_021914</a>
<b>Reactivity</b>	Human
<b>Host</b>	mouse
<b>Clonality</b>	monoclonal
<b>Isotype</b>	IgG1 Kappa
<b>Clone Names</b>	6G9
<b>Calculated MW</b>	18737

### Additional Information

---

<b>Gene ID</b>	1073
<b>Other Names</b>	Cofilin-2, Cofilin, muscle isoform, CFL2
<b>Target/Specificity</b>	CFL2 (NP_068733, 57 a.a. ~ 166 a.a) partial recombinant protein with GST tag. MW of the GST tag alone is 26 KDa.
<b>Dilution</b>	WB~~1:500~1000 IHC~~1:100~500 IF~~1:50~200 E~~N/A
<b>Format</b>	Clear, colorless solution in phosphate buffered saline, pH 7.2 .
<b>Storage</b>	Store at -20°C or lower. Aliquot to avoid repeated freezing and thawing.
<b>Precautions</b>	CFL2 Antibody (monoclonal) (M03) is for research use only and not for use in diagnostic or therapeutic procedures.

### Background

---

This gene encodes an intracellular protein that is involved in the regulation of actin-filament dynamics. This protein is a major component of intranuclear and cytoplasmic actin rods. It can bind G- and F-actin in a 1:1 ratio of cofilin to actin, and it reversibly controls actin polymerization and depolymerization in a pH-dependent manner. Mutations in this gene cause nemaline myopathy type 7, a form of congenital myopathy. Alternative splicing results in multiple transcript variants.

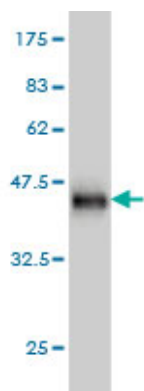
### References

---

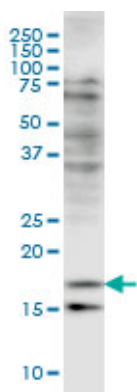
Muscle LIM protein interacts with cofilin 2 and regulates F-actin dynamics in cardiac and skeletal muscle. Papalouka V, et al. Mol Cell Biol, 2009 Nov. PMID 19752190. Cofilin activation in peripheral CD4 T cells of

HIV-1 infected patients: a pilot study. Wu Y, et al. Retrovirology, 2008 Oct 17. PMID 18928553. Nemaline myopathy with minicores caused by mutation of the CFL2 gene encoding the skeletal muscle actin-binding protein, cofilin-2. Agrawal PB, et al. Am J Hum Genet, 2007 Jan. PMID 17160903. Global, in vivo, and site-specific phosphorylation dynamics in signaling networks. Olsen JV, et al. Cell, 2006 Nov 3. PMID 17081983. Cofilin cross-bridges adjacent actin protomers and replaces part of the longitudinal F-actin interface. Kudryashov DS, et al. J Mol Biol, 2006 May 5. PMID 16530787.

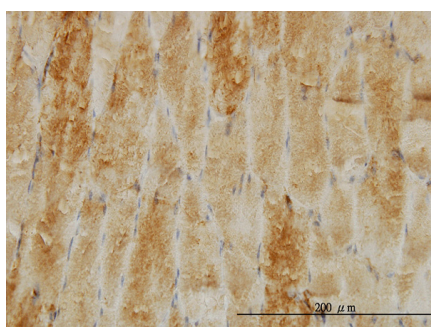
## Images



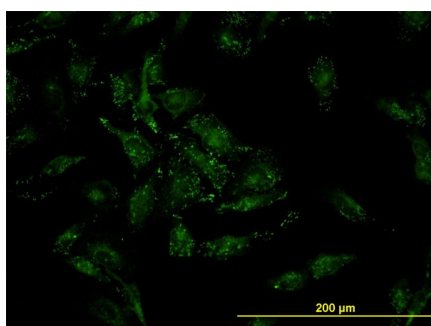
Antibody Reactive Against Recombinant Protein. Western Blot detection against Immunogen (37.84 KDa) .



CFL2 monoclonal antibody (M03), clone 6G9 Western Blot analysis of CFL2 expression in HeLa ( (Cat # AT1507a )

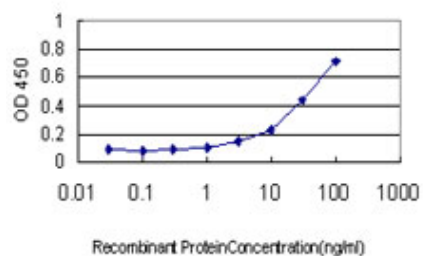


Immunoperoxidase of monoclonal antibody to CFL2 on formalin-fixed paraffin-embedded human skeletal muscle. [antibody concentration 8 ug/ml]



Immunofluorescence of monoclonal antibody to CFL2 on HeLa cell. [antibody concentration 10 ug/ml]

Detection limit for recombinant GST tagged CFL2 is approximately 1ng/ml as a capture antibody.



Please note: All products are 'FOR RESEARCH USE ONLY. NOT FOR USE IN DIAGNOSTIC OR THERAPEUTIC PROCEDURES'.