

CGREF1 Antibody (monoclonal) (M01)

Mouse monoclonal antibody raised against a partial recombinant CGREF1.

Catalog # AT1510a

Product Information

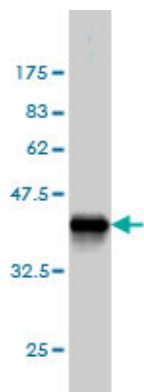
Application	WB, IP, E
Primary Accession	Q99674
Other Accession	BC034764
Reactivity	Human
Host	mouse
Clonality	monoclonal
Isotype	IgG1 Kappa
Clone Names	2D7
Calculated MW	33456

Additional Information

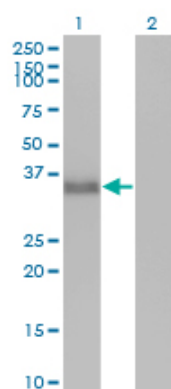
Gene ID	10669
Other Names	Cell growth regulator with EF hand domain protein 1, Cell growth regulatory gene 11 protein, Hydrophobestin, CGREF1, CGR11
Target/Specificity	CGREF1 (AAH34764, 136 a.a. ~ 235 a.a) partial recombinant protein with GST tag. MW of the GST tag alone is 26 KDa.
Dilution	WB~~1:500~1000 IP~~N/A E~~N/A
Format	Clear, colorless solution in phosphate buffered saline, pH 7.2 .
Storage	Store at -20°C or lower. Aliquot to avoid repeated freezing and thawing.
Precautions	CGREF1 Antibody (monoclonal) (M01) is for research use only and not for use in diagnostic or therapeutic procedures.

References

Variation at the NFATC2 Locus Increases the Risk of Thiazolinedinedione-Induced Edema in the Diabetes REduction Assessment with ramipril and rosiglitazone Medication (DREAM) Study. Bailey SD, et al. Diabetes Care, 2010 Jul 13. PMID 20628086. Gene-centric association signals for lipids and apolipoproteins identified via the HumanCVD BeadChip. Talmud PJ, et al. Am J Hum Genet, 2009 Nov. PMID 19913121. Diversification of transcriptional modulation: large-scale identification and characterization of putative alternative promoters of human genes. Kimura K, et al. Genome Res, 2006 Jan. PMID 16344560. Transcriptome analysis of human gastric cancer. Oh JH, et al. Mamm Genome, 2005 Dec. PMID 16341674. Generation and initial analysis of more than 15,000 full-length human and mouse cDNA sequences. Strausberg RL, et al. Proc Natl Acad Sci U S A, 2002 Dec 24. PMID 12477932.

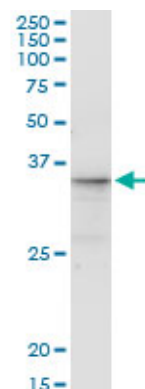


Antibody Reactive Against Recombinant Protein. Western Blot detection against Immunogen (36.63 KDa) .

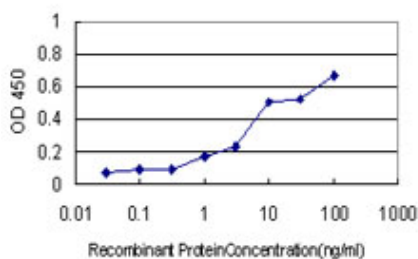


Western Blot analysis of CGREF1 expression in transfected 293T cell line by CGREF1 monoclonal antibody (M01), clone 2D7.

Lane 1: CGREF1 transfected lysate(31.9 KDa).
Lane 2: Non-transfected lysate.



Immunoprecipitation of CGREF1 transfected lysate using anti-CGREF1 monoclonal antibody and Protein A Magnetic Bead ([U0007](#)), and immunoblotted with CGREF1 monoclonal antibody.



Detection limit for recombinant GST tagged CGREF1 is approximately 1ng/ml as a capture antibody.

Please note: All products are 'FOR RESEARCH USE ONLY. NOT FOR USE IN DIAGNOSTIC OR THERAPEUTIC PROCEDURES'.