

CGRRF1 Antibody (monoclonal) (M01)

Mouse monoclonal antibody raised against a full length recombinant CGRRF1.

Catalog # AT1511a

Product Information

Application	E
Primary Accession	Q99675
Other Accession	BC015063
Reactivity	Human
Host	mouse
Clonality	monoclonal
Isotype	IgG1 kappa
Clone Names	2.0E+12
Calculated MW	38242

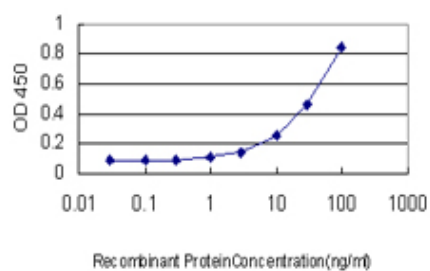
Additional Information

Gene ID	10668
Other Names	Cell growth regulator with RING finger domain protein 1, Cell growth regulatory gene 19 protein, RING finger protein 197, CGRRF1, CGR19, RNF197
Target/Specificity	CGRRF1 (AAH15063, 36 a.a. ~ 332 a.a) full-length recombinant protein with GST tag. MW of the GST tag alone is 26 KDa.
Dilution	E~~N/A
Format	Clear, colorless solution in phosphate buffered saline, pH 7.2 .
Storage	Store at -20°C or lower. Aliquot to avoid repeated freezing and thawing.
Precautions	CGRRF1 Antibody (monoclonal) (M01) is for research use only and not for use in diagnostic or therapeutic procedures.

References

An approach based on a genome-wide association study reveals candidate loci for narcolepsy. Shimada M, et al. Hum Genet, 2010 Oct. PMID 20677014. Toward a confocal subcellular atlas of the human proteome. Barbe L, et al. Mol Cell Proteomics, 2008 Mar. PMID 18029348. The status, quality, and expansion of the NIH full-length cDNA project: the Mammalian Gene Collection (MGC). Gerhard DS, et al. Genome Res, 2004 Oct. PMID 15489334. Generation and initial analysis of more than 15,000 full-length human and mouse cDNA sequences. Strausberg RL, et al. Proc Natl Acad Sci U S A, 2002 Dec 24. PMID 12477932. Novel transcription factors in human CD34 antigen-positive hematopoietic cells. Gomes I, et al. Blood, 2002 Jul 1. PMID 12070015.

Images



Detection limit for recombinant GST tagged CGRRF1 is approximately 3ng/ml as a capture antibody.

Please note: All products are 'FOR RESEARCH USE ONLY. NOT FOR USE IN DIAGNOSTIC OR THERAPEUTIC PROCEDURES'.