

# CHERP Antibody (monoclonal) (M01)

Mouse monoclonal antibody raised against a partial recombinant CHERP.

Catalog # AT1517a

## Product Information

---

<b>Application</b>	WB
<b>Primary Accession</b>	<a href="#">Q8IWX8</a>
<b>Other Accession</b>	<a href="#">NM_006387</a>
<b>Reactivity</b>	Human
<b>Host</b>	mouse
<b>Clonality</b>	monoclonal
<b>Isotype</b>	IgG2b Kappa
<b>Clone Names</b>	2H5
<b>Calculated MW</b>	103702

## Additional Information

---

<b>Gene ID</b>	10523
<b>Other Names</b>	Calcium homeostasis endoplasmic reticulum protein, ERPROT 213-21, SR-related CTD-associated factor 6, CHERP ( <a href="#">HGNC:16930</a> )
<b>Target/Specificity</b>	CHERP (AAH21294.1, 795 a.a. ~ 883 a.a) partial recombinant protein with GST tag. MW of the GST tag alone is 26 KDa.
<b>Dilution</b>	WB~~1:500~1000
<b>Format</b>	Clear, colorless solution in phosphate buffered saline, pH 7.2 .
<b>Storage</b>	Store at -20°C or lower. Aliquot to avoid repeated freezing and thawing.
<b>Precautions</b>	CHERP Antibody (monoclonal) (M01) is for research use only and not for use in diagnostic or therapeutic procedures.

## References

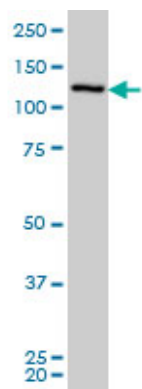
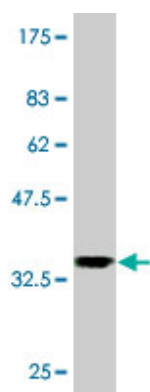
---

1.Nuclear ALG-2 Interacts with CHERP Ca<sup>2+</sup>-Dependently and Participates in Regulation of Alternative Splicing of Inositol Trisphosphate Receptor Type 1 (IP3R1) Pre-mRNA.Sasaki-Osugi K, Imoto C, Takahara T, Shibata H, Maki MJ Biol Chem. 2013 Sep 27.

## Images

---

Antibody Reactive Against Recombinant Protein.Western Blot detection against Immunogen (35.53 KDa) .



CHERP monoclonal antibody (M01), clone 2H5 Western  
Blot analysis of CHERP expression in IMR-32 ( Cat #  
AT1517a )

Please note: All products are 'FOR RESEARCH USE ONLY. NOT FOR USE IN DIAGNOSTIC OR THERAPEUTIC PROCEDURES'.