

CHFR Antibody (monoclonal) (M08)

Mouse monoclonal antibody raised against a partial recombinant CHFR.

Catalog # AT1519a

Product Information

Application	WB, E
Primary Accession	Q96EP1
Other Accession	BC012072
Reactivity	Human
Host	mouse
Clonality	monoclonal
Isotype	IgG2a Kappa
Clone Names	2B11
Calculated MW	73386

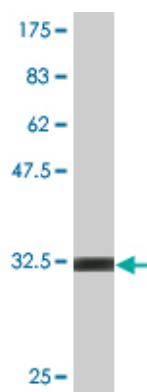
Additional Information

Gene ID	55743
Other Names	E3 ubiquitin-protein ligase CHFR, 632-, Checkpoint with forkhead and RING finger domains protein, RING finger protein 196, CHFR, RNF196
Target/Specificity	CHFR (AAH12072.1, 136 a.a. ~ 194 a.a) partial recombinant protein with GST tag. MW of the GST tag alone is 26 KDa.
Dilution	WB~~1:500~1000 E~~N/A
Format	Clear, colorless solution in phosphate buffered saline, pH 7.2 .
Storage	Store at -20°C or lower. Aliquot to avoid repeated freezing and thawing.
Precautions	CHFR Antibody (monoclonal) (M08) is for research use only and not for use in diagnostic or therapeutic procedures.

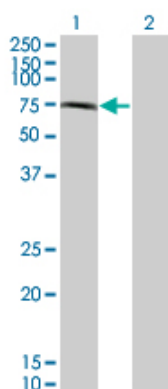
References

CHFR functions as a ubiquitin ligase for HLTF to regulate its stability and functions. Kim JM, et al. Biochem Biophys Res Commun, 2010 May 14. PMID 20388495. Aberrant gene methylation in the peritoneal fluid is a risk factor predicting peritoneal recurrence in gastric cancer. Hiraki M, et al. World J Gastroenterol, 2010 Jan 21. PMID 20082478. Aberrant promoter hypermethylation of the CHFR gene in oral squamous cell carcinomas. Baba S, et al. Oncol Rep, 2009 Nov. PMID 19787237. CHFR promoter hypermethylation and reduced CHFR mRNA expression in ovarian cancer. Gao Y, et al. Int J Biol Markers, 2009 Apr-Jun. PMID 19634111. Novel susceptibility loci for second primary tumors/recurrence in head and neck cancer patients: large-scale evaluation of genetic variants. Wu X, et al. Cancer Prev Res (Phila), 2009 Jul. PMID 19584075.

Images



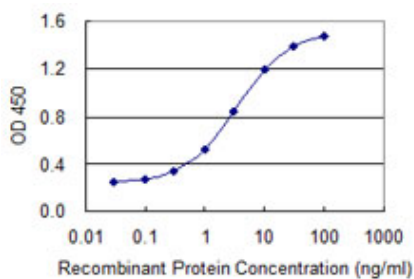
Antibody Reactive Against Recombinant Protein. Western Blot detection against Immunogen (32.12 KDa) .



Western Blot analysis of CHFR expression in transfected 293T cell line by CHFR monoclonal antibody (M08), clone 2B11.

Lane 1: CHFR transfected lysate(72.1 KDa).

Lane 2: Non-transfected lysate.



Detection limit for recombinant GST tagged CHFR is 0.03 ng/ml as a capture antibody.

Please note: All products are 'FOR RESEARCH USE ONLY. NOT FOR USE IN DIAGNOSTIC OR THERAPEUTIC PROCEDURES'.