

CHRAC1 Antibody (monoclonal) (M05)

Mouse monoclonal antibody raised against a full length recombinant CHRAC1.

Catalog # AT1526a

Product Information

Application	WB
Primary Accession	Q9NRG0
Other Accession	BC015891
Reactivity	Human
Host	mouse
Clonality	monoclonal
Isotype	IgG2a Kappa
Clone Names	4B8
Calculated MW	14711

Additional Information

Gene ID	54108
Other Names	Chromatin accessibility complex protein 1, CHRAC-1, Chromatin accessibility complex 15 kDa protein, CHRAC-15, HuCHRAC15, DNA polymerase epsilon subunit p15, CHRAC1, CHRAC15
Target/Specificity	CHRAC1 (AAH15891, 1 a.a. ~ 131 a.a) full-length recombinant protein with GST tag. MW of the GST tag alone is 26 KDa.
Dilution	WB~~1:500~1000
Format	Clear, colorless solution in phosphate buffered saline, pH 7.2 .
Storage	Store at -20°C or lower. Aliquot to avoid repeated freezing and thawing.
Precautions	CHRAC1 Antibody (monoclonal) (M05) is for research use only and not for use in diagnostic or therapeutic procedures.

Background

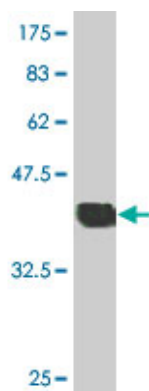
CHRAC1 is a histone-fold protein that interacts with other histone-fold proteins to bind DNA in a sequence-independent manner. These histone-fold protein dimers combine within larger enzymatic complexes for DNA transcription, replication, and packaging.

References

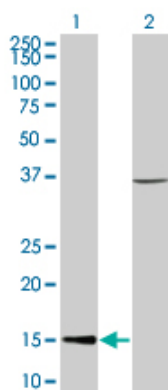
Diversification of transcriptional modulation: large-scale identification and characterization of putative alternative promoters of human genes. Kimura K, et al. Genome Res, 2006 Jan. PMID 16344560. The status,

quality, and expansion of the NIH full-length cDNA project: the Mammalian Gene Collection (MGC). Gerhard DS, et al. Genome Res, 2004 Oct. PMID 15489334. Complete sequencing and characterization of 21,243 full-length human cDNAs. Ota T, et al. Nat Genet, 2004 Jan. PMID 14702039. Generation and initial analysis of more than 15,000 full-length human and mouse cDNA sequences. Strausberg RL, et al. Proc Natl Acad Sci U S A, 2002 Dec 24. PMID 12477932. An ACF1-ISWI chromatin-remodeling complex is required for DNA replication through heterochromatin. Collins N, et al. Nat Genet, 2002 Dec. PMID 12434153.

Images



Antibody Reactive Against Recombinant Protein. Western Blot detection against Immunogen (40.15 KDa) .



Western Blot analysis of CHRAC1 expression in transfected 293T cell line by CHRAC1 monoclonal antibody (M05), clone 4B8.

Lane 1: CHRAC1 transfected lysate (14.7 KDa).

Lane 2: Non-transfected lysate.

Please note: All products are 'FOR RESEARCH USE ONLY. NOT FOR USE IN DIAGNOSTIC OR THERAPEUTIC PROCEDURES'.