

# CHRAC1 Antibody (monoclonal) (M11)

Mouse monoclonal antibody raised against a partial recombinant CHRAC1.

Catalog # AT1527a

## Product Information

---

Application	WB
Primary Accession	<a href="#">Q9NRG0</a>
Other Accession	<a href="#">NM_017444</a>
Reactivity	Human
Host	mouse
Clonality	monoclonal
Isotype	IgG2a Kappa
Clone Names	4E8
Calculated MW	14711

## Additional Information

---

Gene ID	54108
Other Names	Chromatin accessibility complex protein 1, CHRAC-1, Chromatin accessibility complex 15 kDa protein, CHRAC-15, HuCHRAC15, DNA polymerase epsilon subunit p15, CHRAC1, CHRAC15
Target/Specificity	CHRAC1 (NP_059140, 1 a.a. ~ 96 a.a) partial recombinant protein with GST tag. MW of the GST tag alone is 26 KDa.
Dilution	WB~~1:500~1000
Format	Clear, colorless solution in phosphate buffered saline, pH 7.2 .
Storage	Store at -20°C or lower. Aliquot to avoid repeated freezing and thawing.
Precautions	CHRAC1 Antibody (monoclonal) (M11) is for research use only and not for use in diagnostic or therapeutic procedures.

## Background

---

CHRAC1 is a histone-fold protein that interacts with other histone-fold proteins to bind DNA in a sequence-independent manner. These histone-fold protein dimers combine within larger enzymatic complexes for DNA transcription, replication, and packaging.

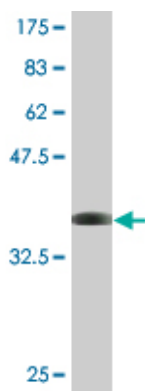
## References

---

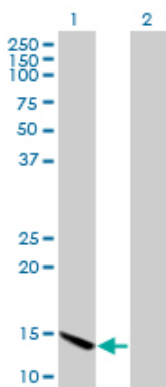
Diversification of transcriptional modulation: large-scale identification and characterization of putative alternative promoters of human genes. Kimura K, et al. Genome Res, 2006 Jan. PMID 16344560. The status,

quality, and expansion of the NIH full-length cDNA project: the Mammalian Gene Collection (MGC). Gerhard DS, et al. Genome Res, 2004 Oct. PMID 15489334. Complete sequencing and characterization of 21,243 full-length human cDNAs. Ota T, et al. Nat Genet, 2004 Jan. PMID 14702039. Generation and initial analysis of more than 15,000 full-length human and mouse cDNA sequences. Strausberg RL, et al. Proc Natl Acad Sci U S A, 2002 Dec 24. PMID 12477932. An ACF1-ISWI chromatin-remodeling complex is required for DNA replication through heterochromatin. Collins N, et al. Nat Genet, 2002 Dec. PMID 12434153.

## Images



Antibody Reactive Against Recombinant Protein. Western Blot detection against Immunogen (36.3 KDa) .



Western Blot analysis of CHRAC1 expression in transfected 293T cell line by CHRAC1 monoclonal antibody (M11), clone 4E7.

Lane 1: CHRAC1 transfected lysate (14.7 KDa).

Lane 2: Non-transfected lysate.

Please note: All products are 'FOR RESEARCH USE ONLY. NOT FOR USE IN DIAGNOSTIC OR THERAPEUTIC PROCEDURES'.